

# DISTRIBUTION ZONES

## DIST 5

Aalborg M / M/R  
Brande M / M2 / M/R  
Ellidshøj M/R  
Haverslev M/R  
Herning M/R  
Karup M Biogas / M/R  
Ll. Torup M/R  
Viborg M / M/R



## DIST 4

Brøndby M/R  
Dragør M/R  
Karlsunde M/R  
Køge M/R  
Lyngby M/R  
Måløv M/R  
Torslunde M/R  
Vallensbæk M/R

DIST 7  
Swedish  
M/R flow

## DIST 1

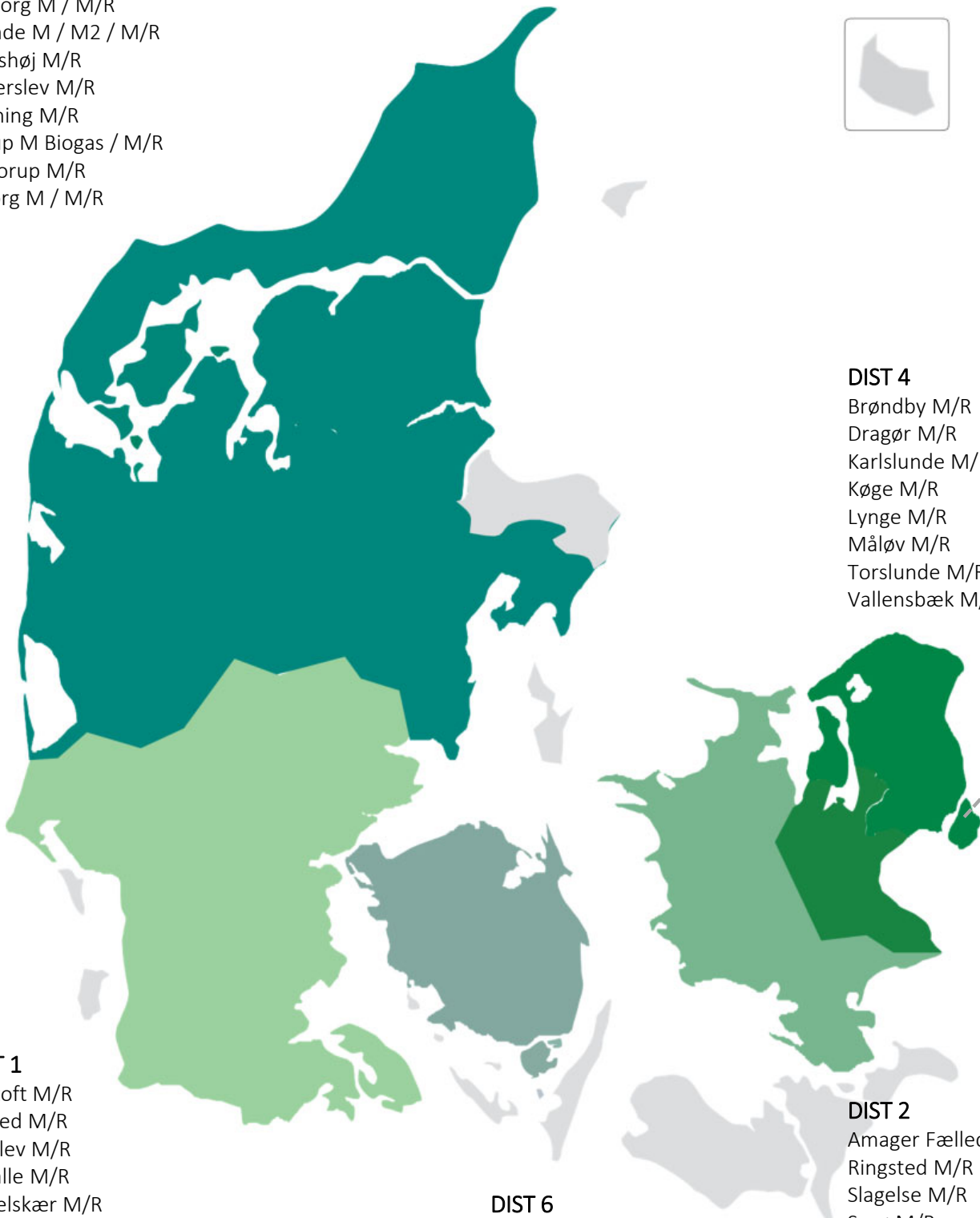
Bevtoft M/R  
Egtved M/R  
Frøslev M/R  
Lilballe M/R  
Ll. Selskær M/R  
Nørskov M/R  
Pottetuse M/R  
St. Andst M / M/R  
Taulov M/R  
Terkelsbøl M /M/R  
Varde M/R

## DIST 6

Højby M / M/R  
Kløholm M/R  
Middelfart M/R  
Nyborg M/R  
Ullerslev M/R  
Vissenbjerg M/R

## DIST 2

Amager Fælled M/R  
Ringsted M/R  
Slagelse M/R  
Sorø M/R  
Stenlille M/R



# DMS DATA QUALITY OF DISTRIBUTION ZONES

## Definition of regions

In accordance with the previous approved methodology for balancing, the Danish and Swedish balancing zone is split into four regions, with three regions in Denmark and one in Sweden.

These regions are further separated into six distribution zones in the Joint Exit Zone, which have historically been divided based on the regional location of data suppliers.

### Distribution zones (DIST)

- Distribution zone 1: Southern Jutland
- Distribution zone 2: Western Zealand, including the Copenhagen area
- Distribution zone 4: Northern Zealand
- Distribution zone 5: Northern Jutland
- Distribution zone 6: Funen
- Distribution zone 7: Sweden

## Method of assessing DMS data quality

Data quality of Daily Metered Sites (DMS) data is assessed for each hour of the gas day and for each distribution zone area by calculating the hourly percentage deviation between non-valid and valid data.

To assess the level of DMS data quality, Energinet has set a threshold that serves as a target for the DMS data's accuracy during the gas day, comparing it with the valid DMS allocations. Given that the model is accumulated, data quality improves during the gas day. The hourly deviation target thresholds are:

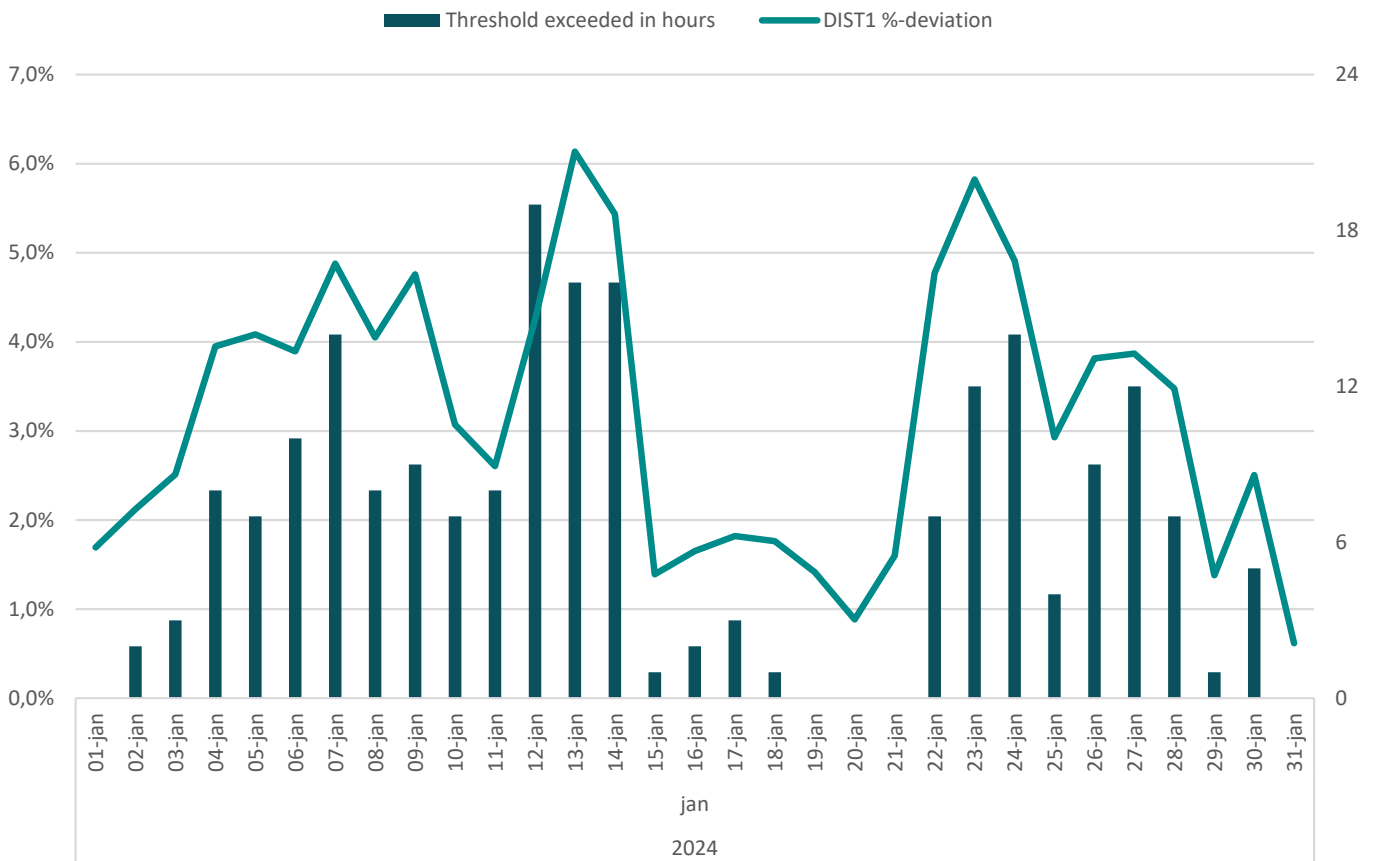
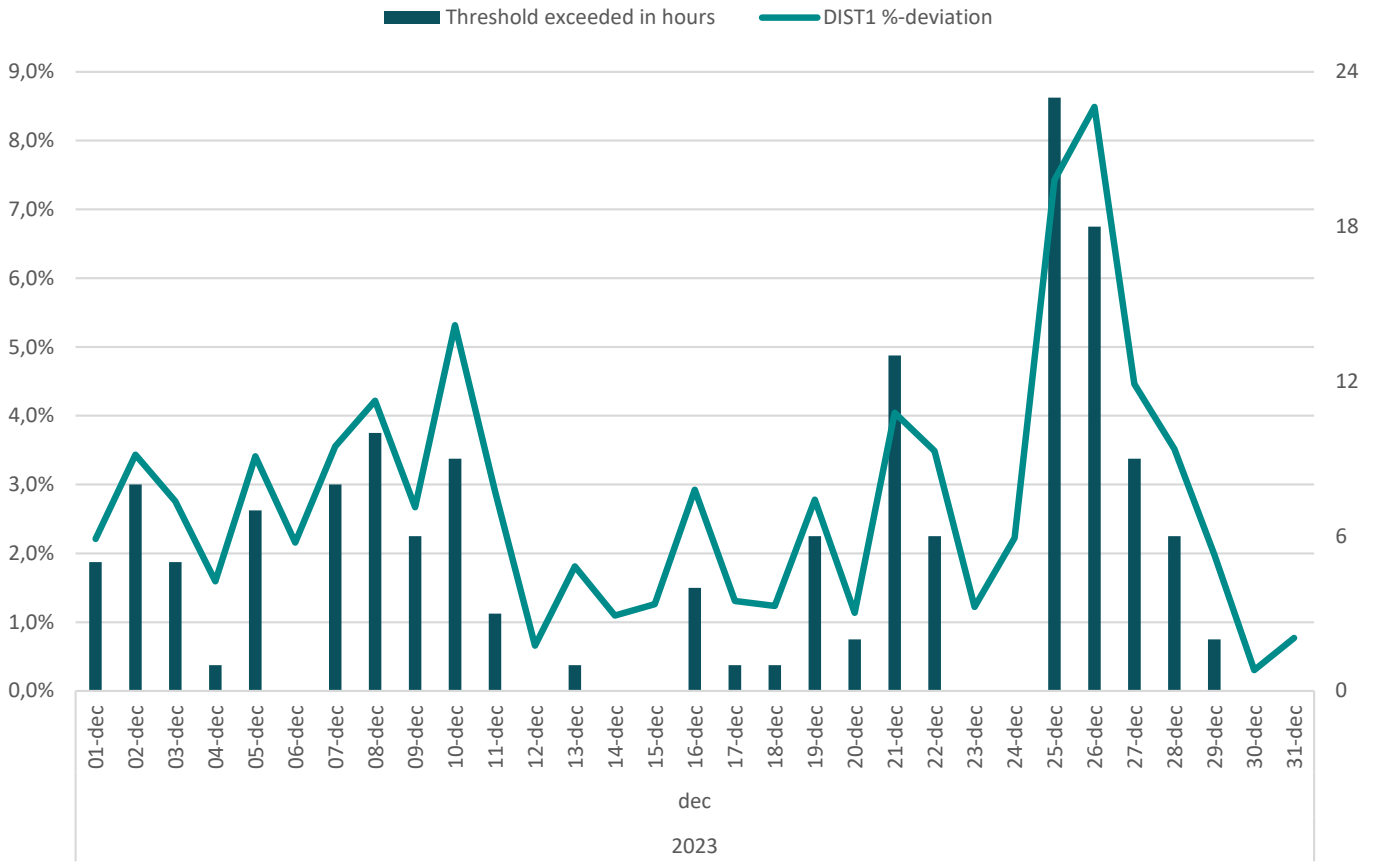
- Hour 1 (06:00): 10 percent
- Hour 2 (07:00): 8 percent
- Hour 3 (08:00): 6 percent
- Hour 4 (09:00): 4 percent
- Remaining hours (10:00 – 05:00): 3 percent

## Overview of average monthly DMS data deviations and total hours exceeding the thresholds (December 2023 – April 2024)

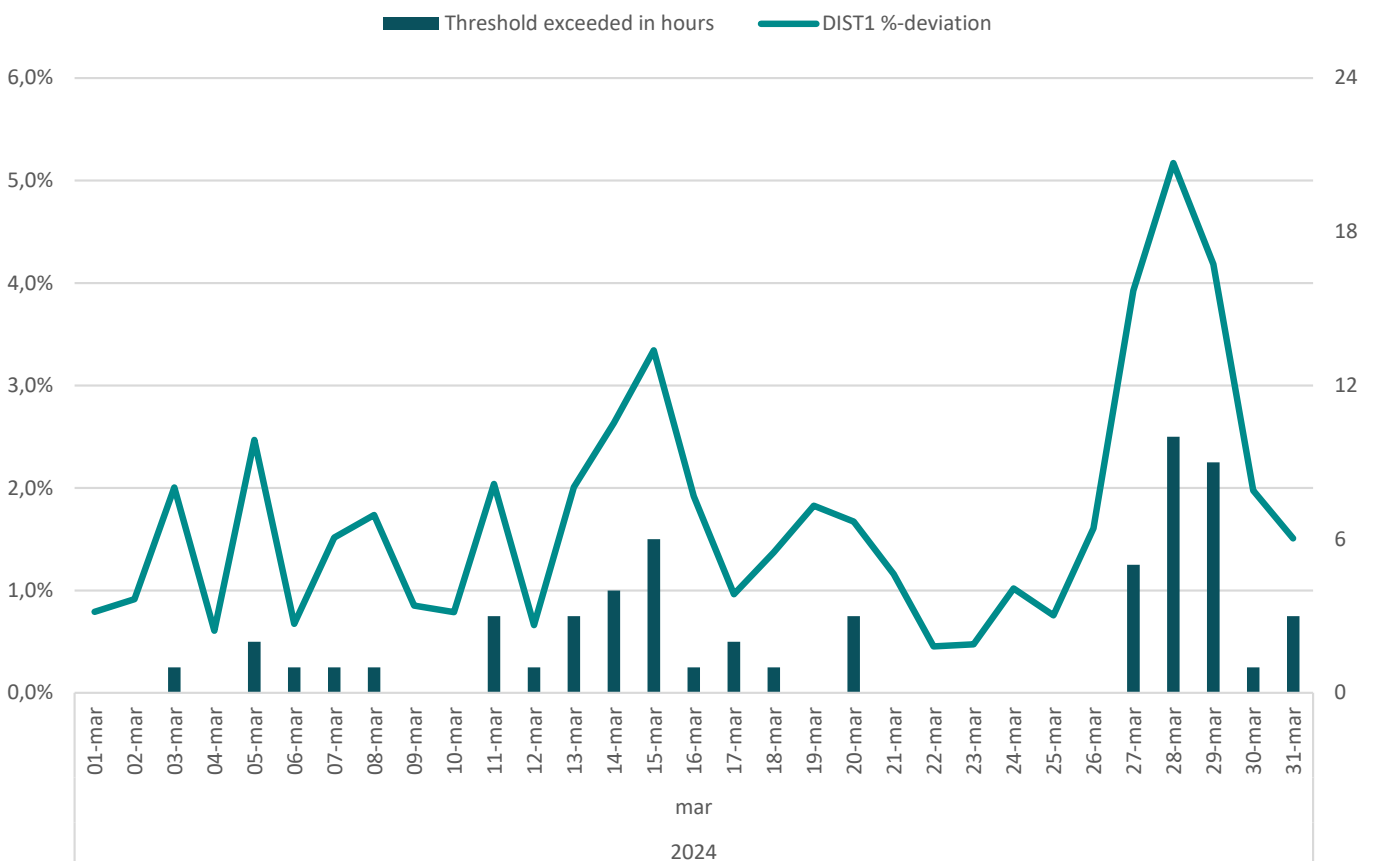
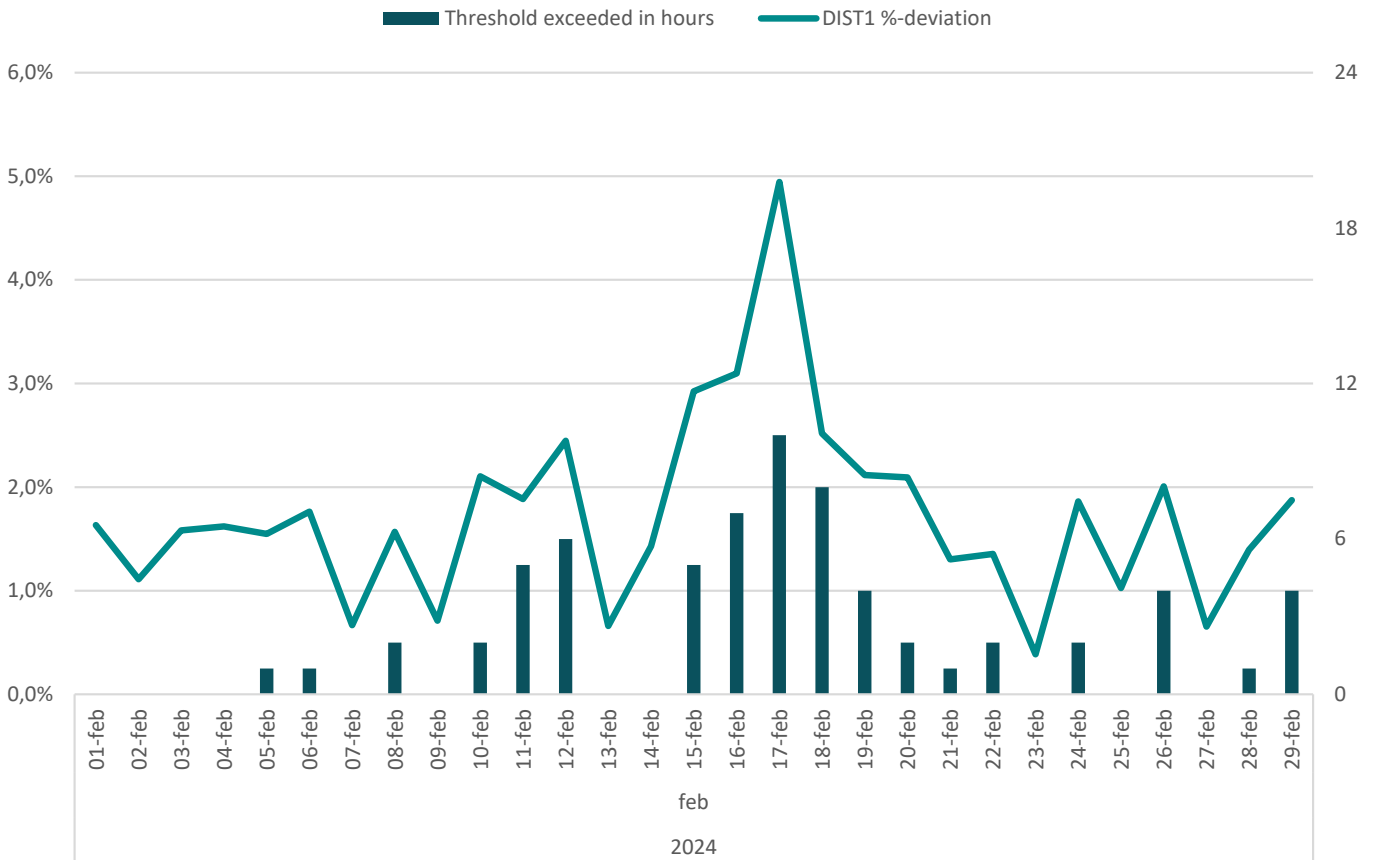
|        | 2023          |       |               |       | 2024          |       |               |       |               |       |
|--------|---------------|-------|---------------|-------|---------------|-------|---------------|-------|---------------|-------|
|        | December      |       | January       |       | February      |       | March         |       | April         |       |
|        | Deviation (%) | Hours | Deviation (%) | Hours | Deviation (%) | Hours | Deviation (%) | Hours | Deviation (%) | Hours |
| DIST 1 | 2.79          | 154   | 3.16          | 205   | 1.73          | 67    | 1.71          | 58    | 2.49          | 114   |
| DIST 2 | 6.76          | 295   | 6.27          | 403   | 10.09         | 500   | 6.79          | 459   | 7.46          | 399   |
| DIST 4 | 1.23          | 32    | 5.50          | 354   | 11.07         | 652   | 1.19          | 41    | 1.27          | 65    |
| DIST 5 | 2.91          | 185   | 2.67          | 132   | 1.76          | 70    | 1.18          | 24    | 2.67          | 177   |
| DIST 6 | 7.14          | 487   | 7.76          | 465   | 6.32          | 353   | 4.62          | 301   | 5.31          | 317   |
| DIST 7 | 5.72          | 151   | 3.89          | 135   | 2.80          | 127   | 2.14          | 92    | 2.61          | 102   |

# **Distribution zone 1: Southern Jutland**

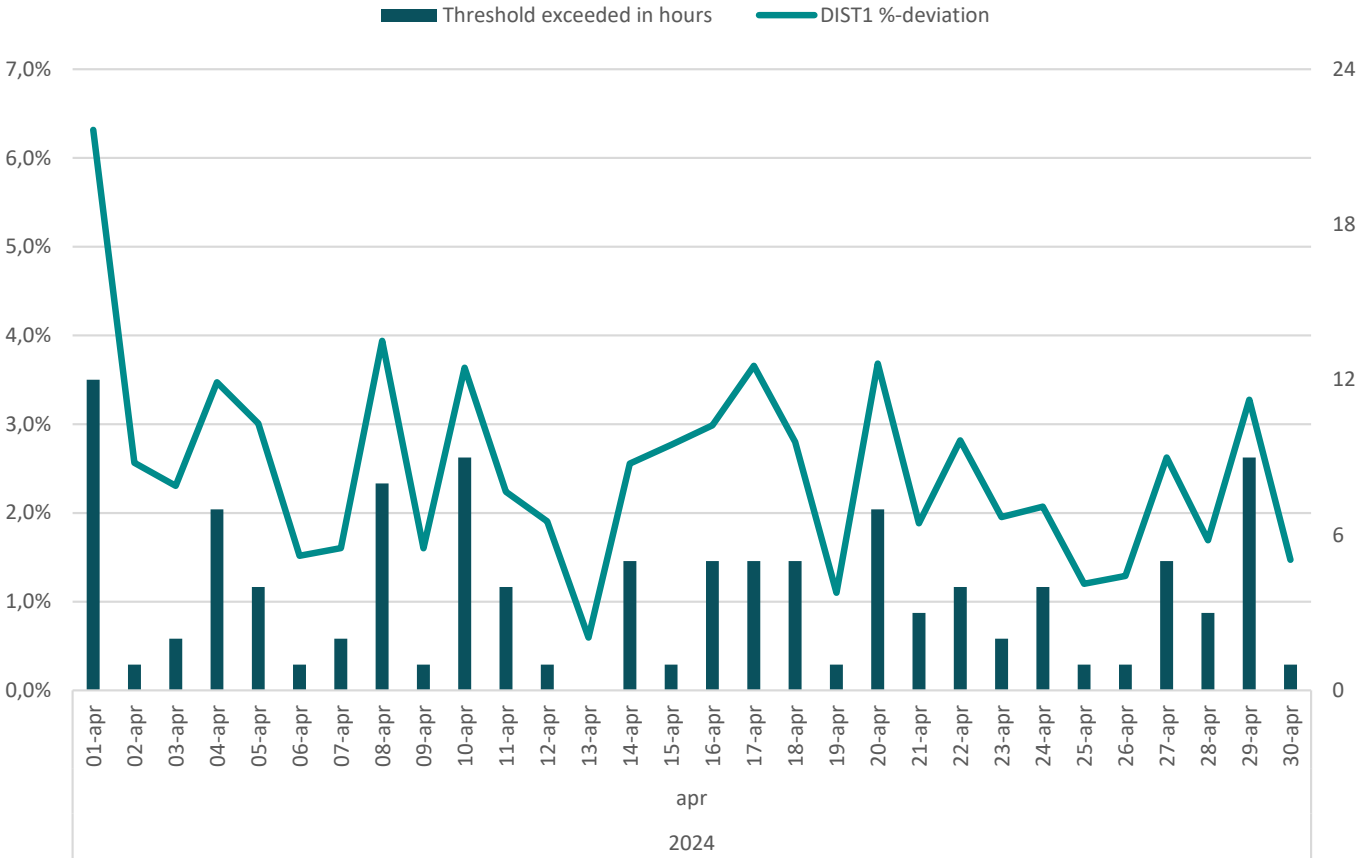
# DISTRIBUTION ZONE 1: SOUTHERN JUTLAND



# DISTRIBUTION ZONE 1: SOUTHERN JUTLAND

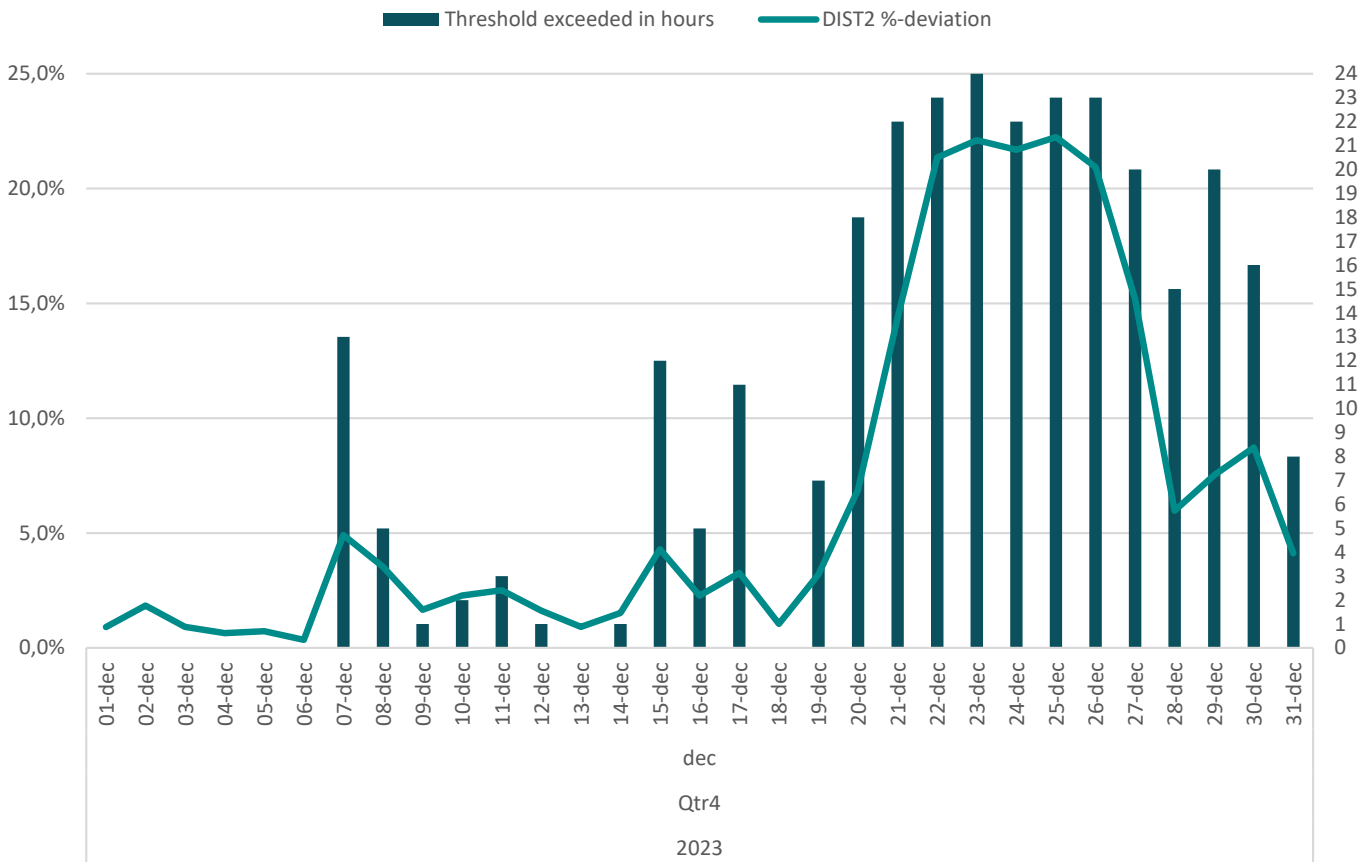


# DISTRIBUTION ZONE 1: SOUTHERN JUTLAND



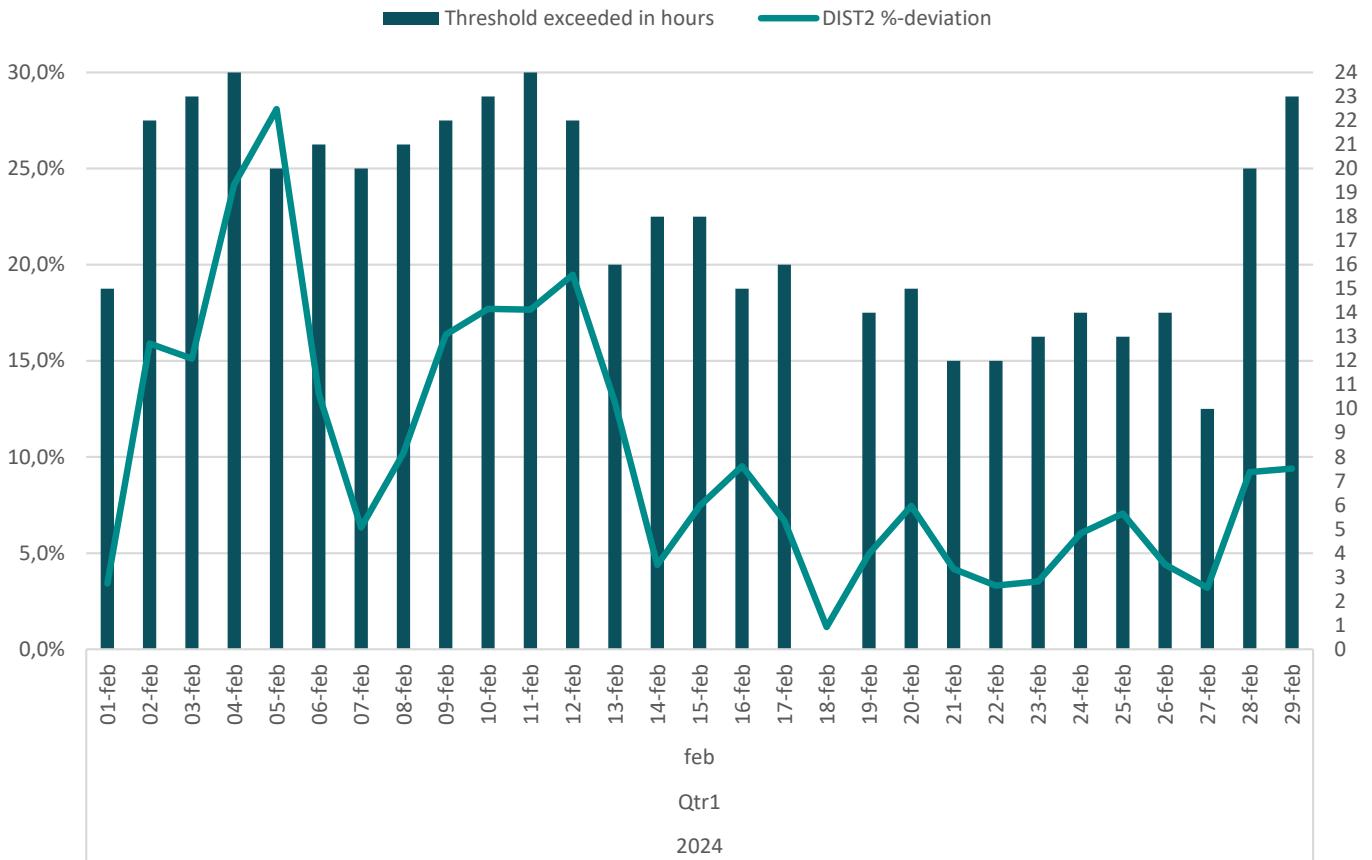
# **Distribution zone 2: Western Zealand**

# DISTRIBUTION ZONE 2: WESTERN ZEALAND

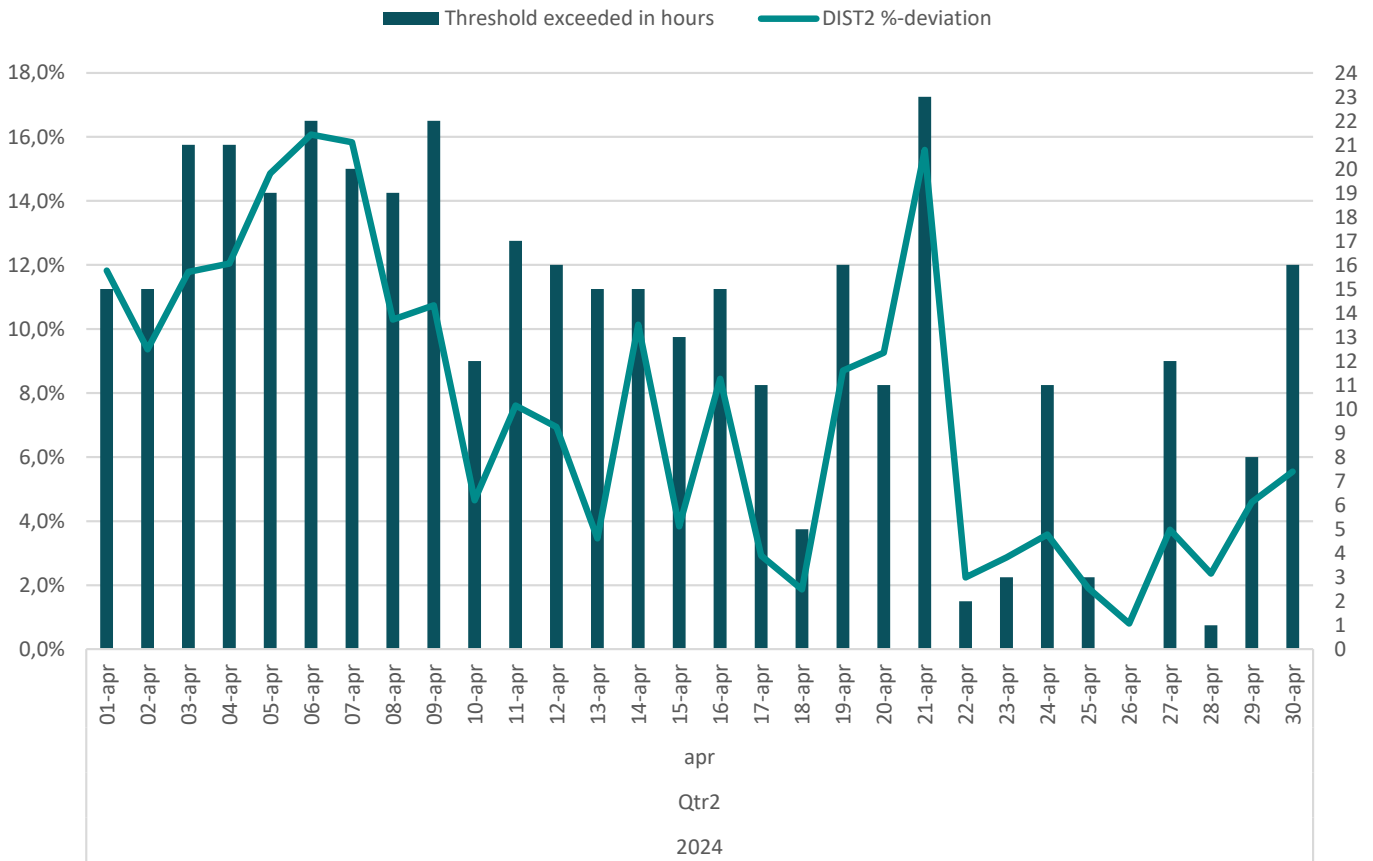




# DISTRIBUTION ZONE 2: WESTERN ZEALAND

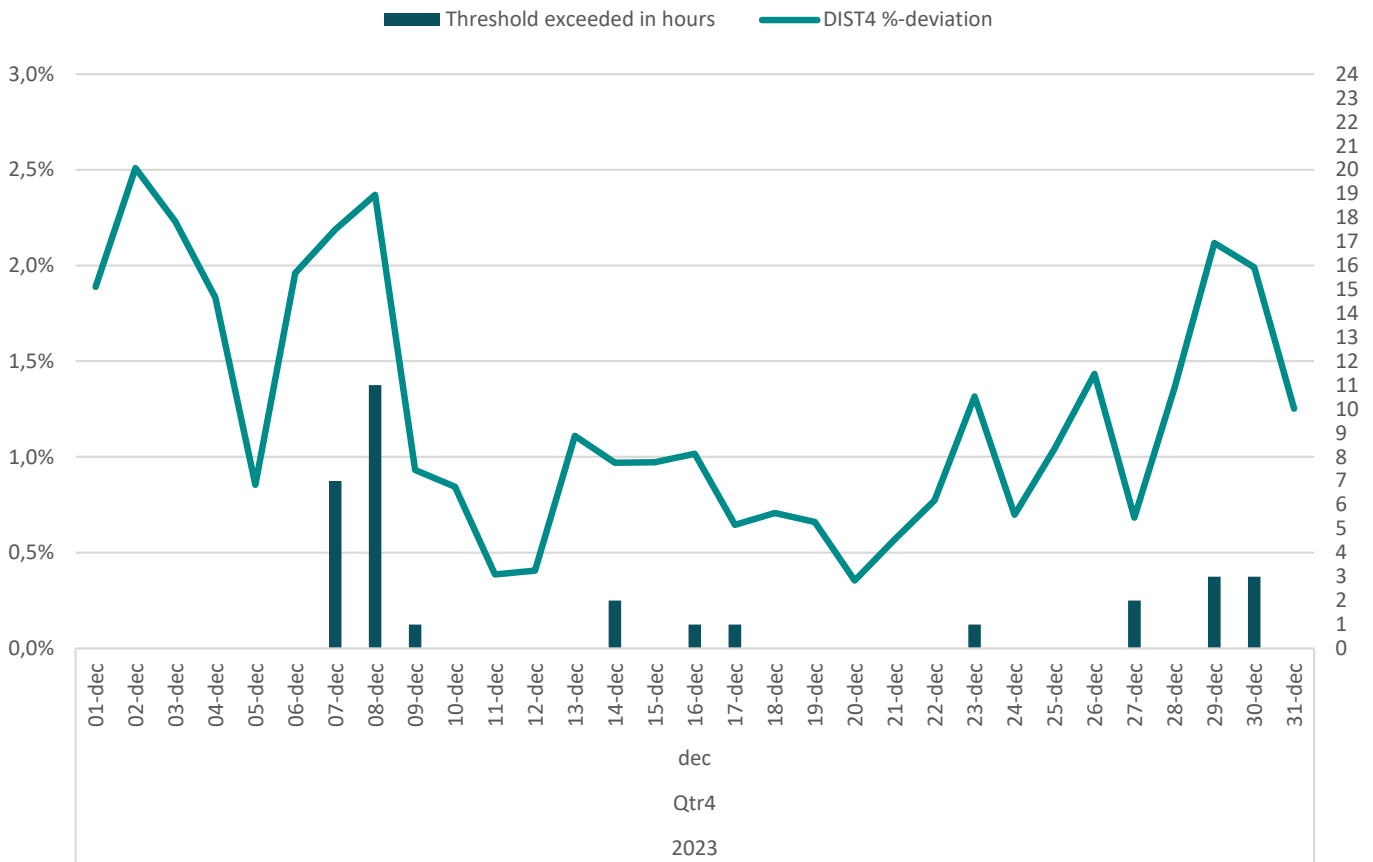


# DISTRIBUTION ZONE 2: WESTERN ZEALAND

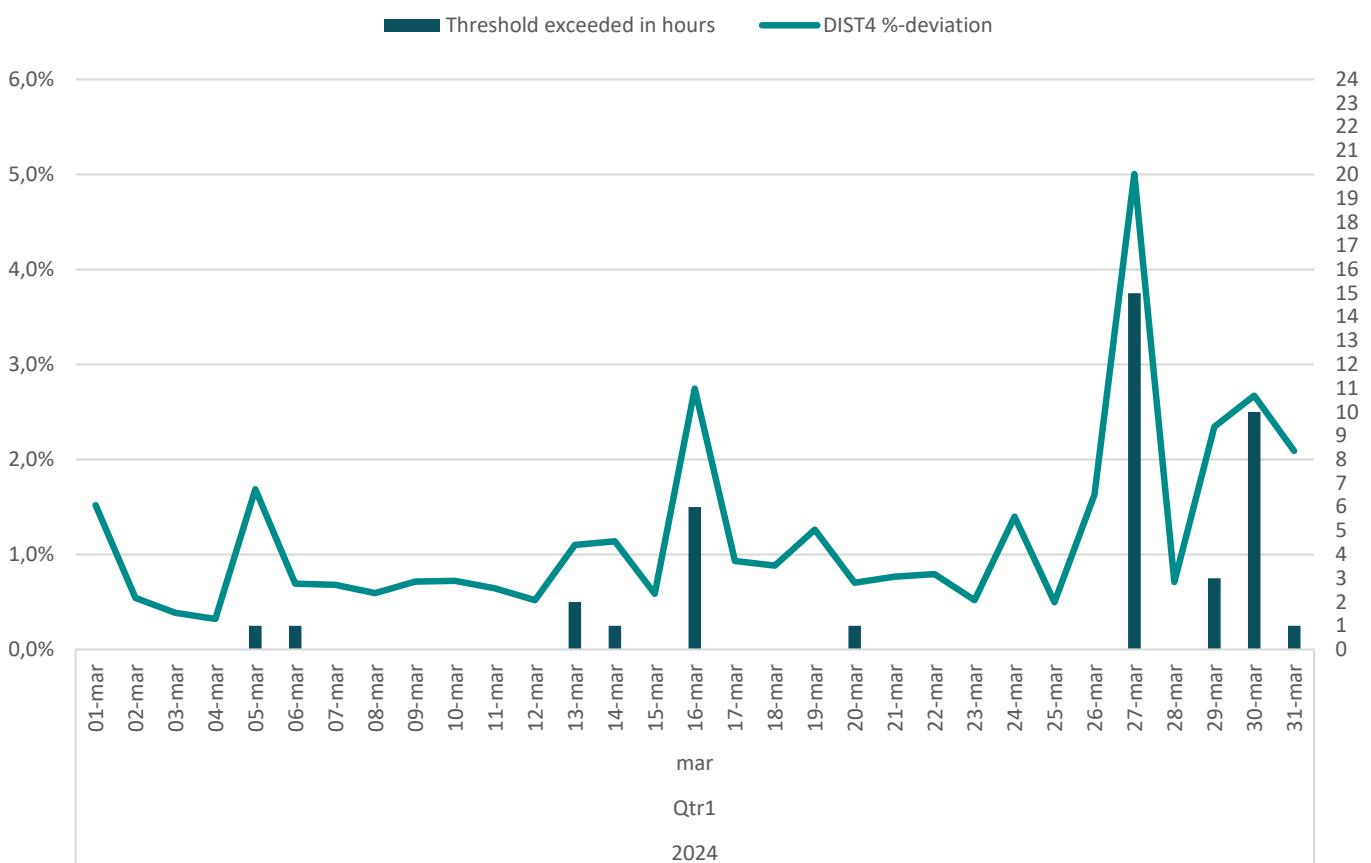
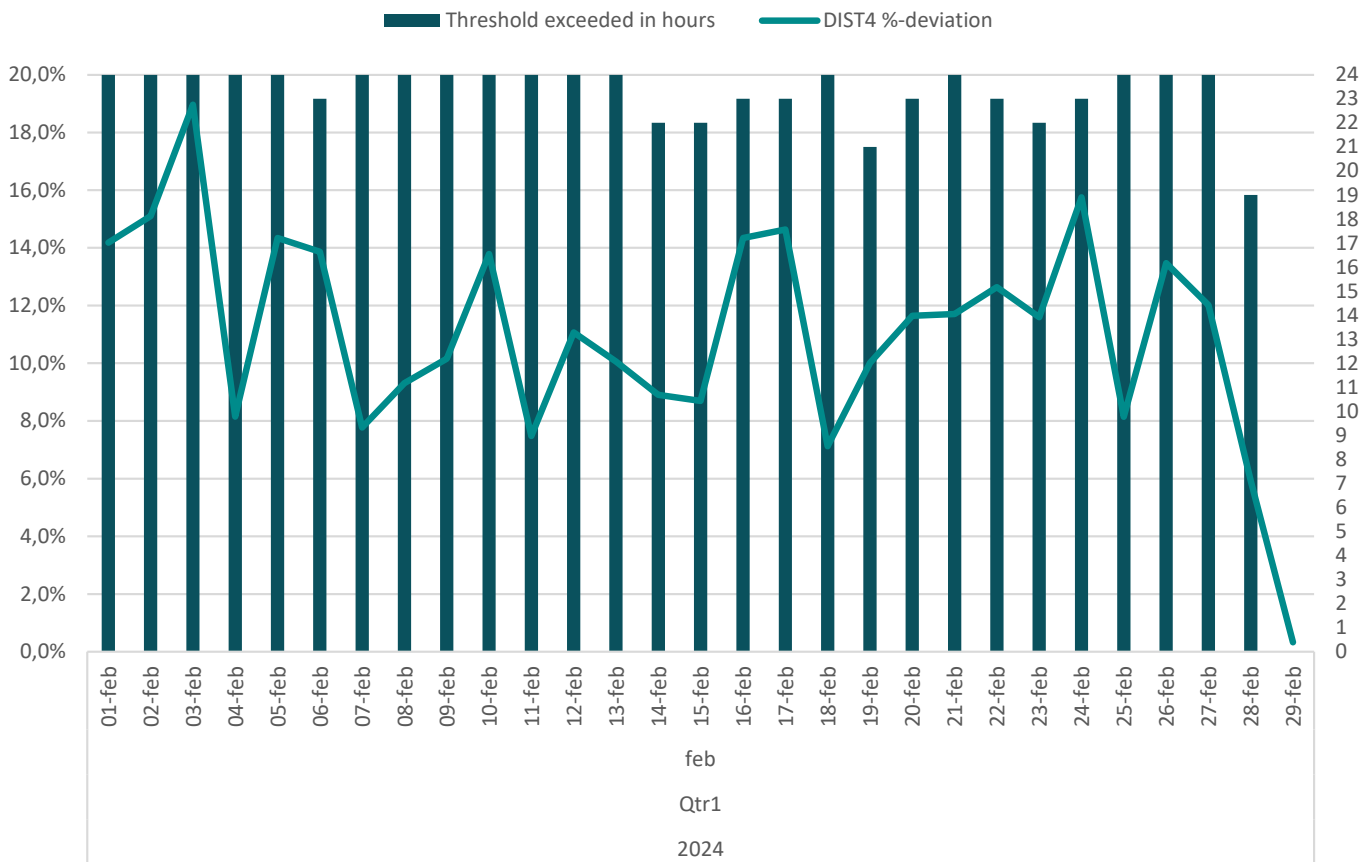


# **Distribution zone 4: Northern Zealand**

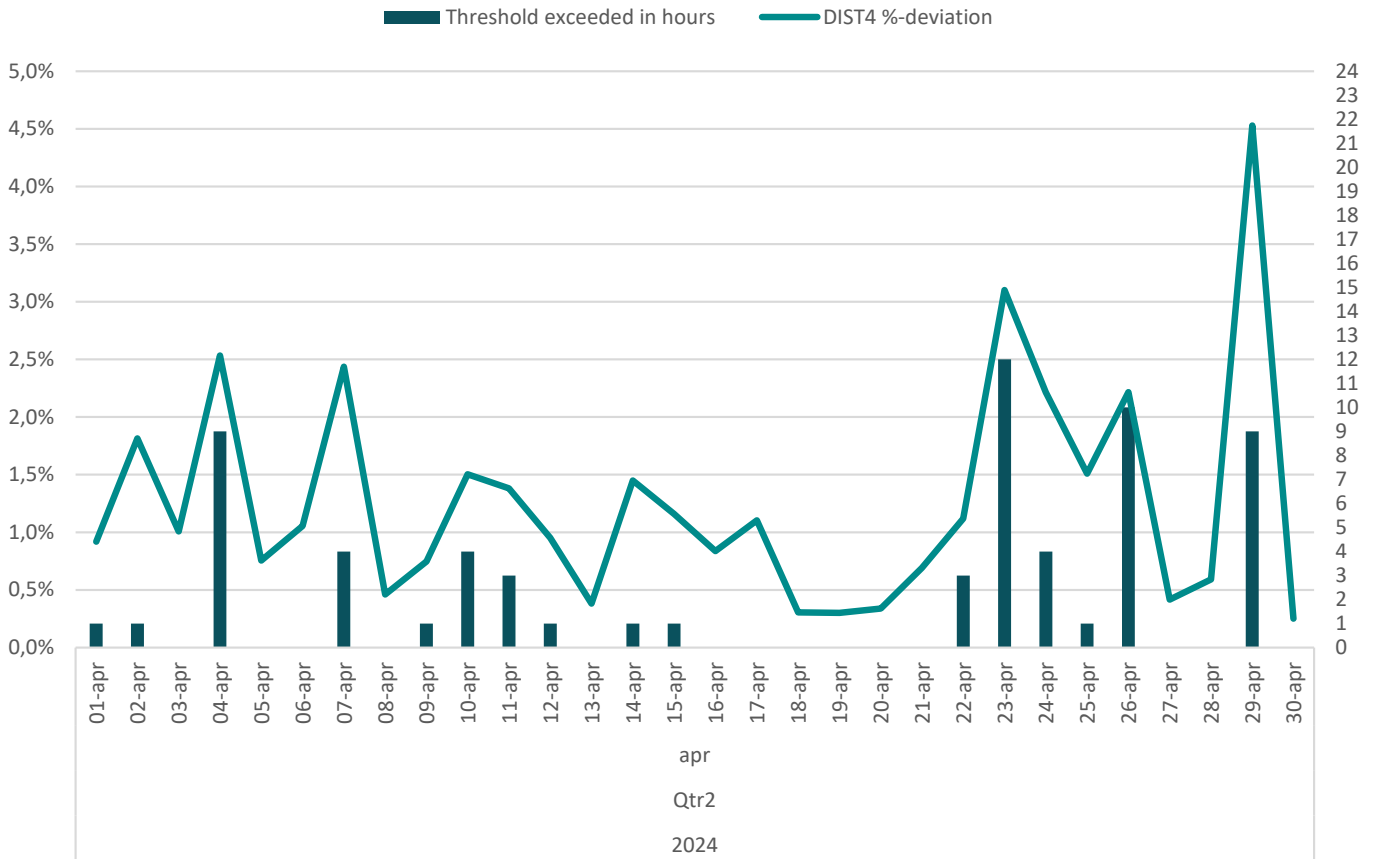
# DISTRIBUTION ZONE 4: NORTHERN ZEALAND



# DISTRIBUTION ZONE 4: NORTHERN ZEALAND

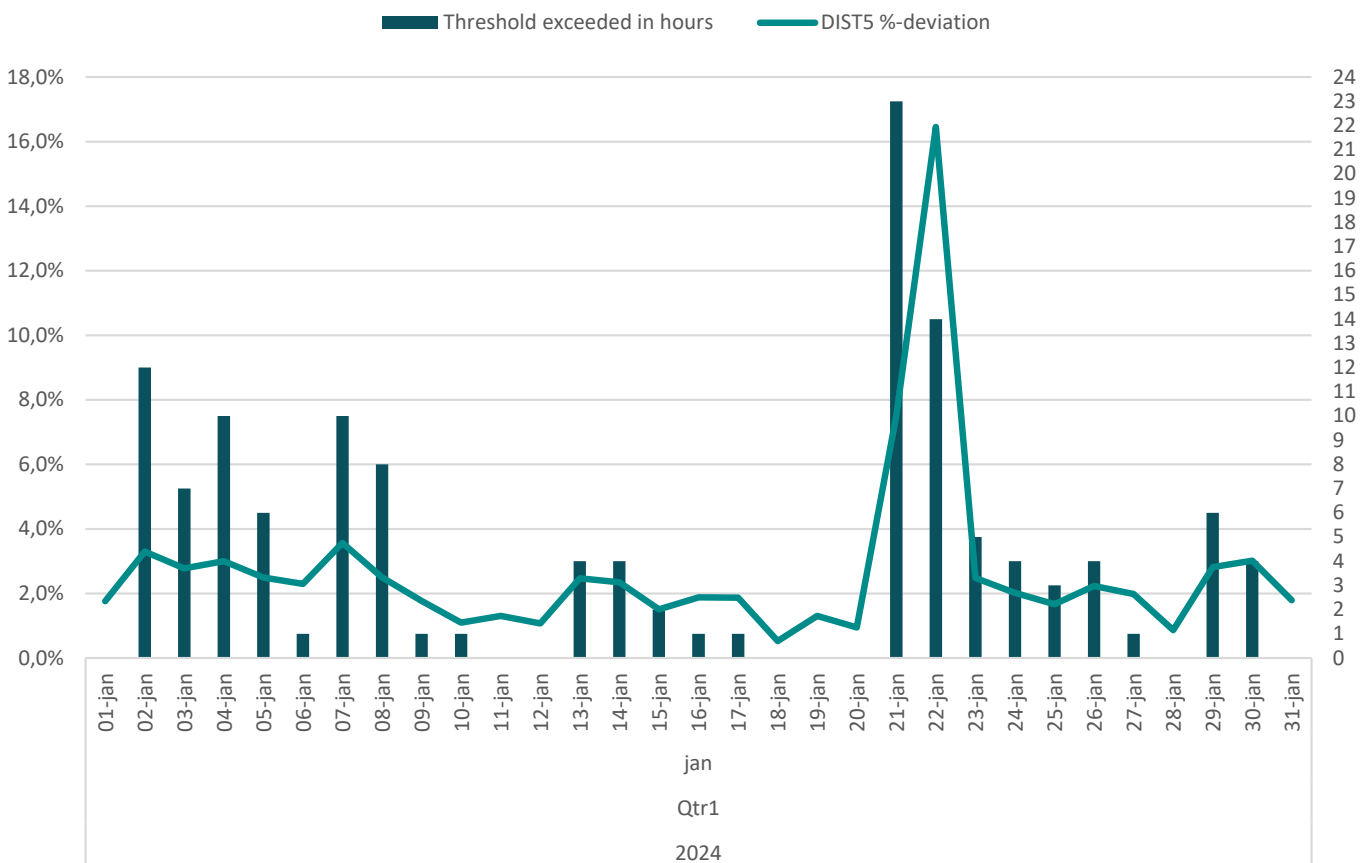
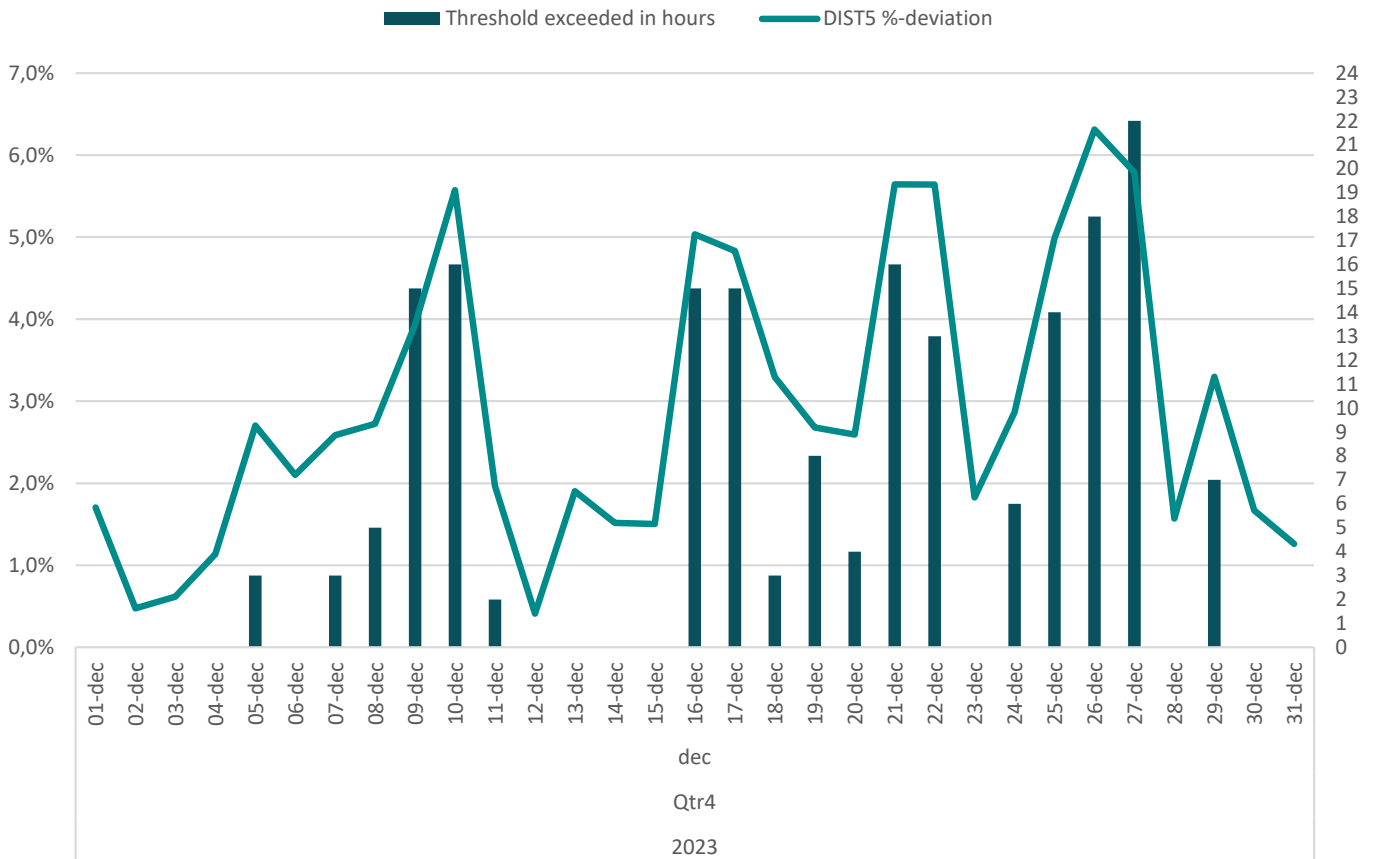


# DISTRIBUTION ZONE 4: NORTHERN ZEALAND



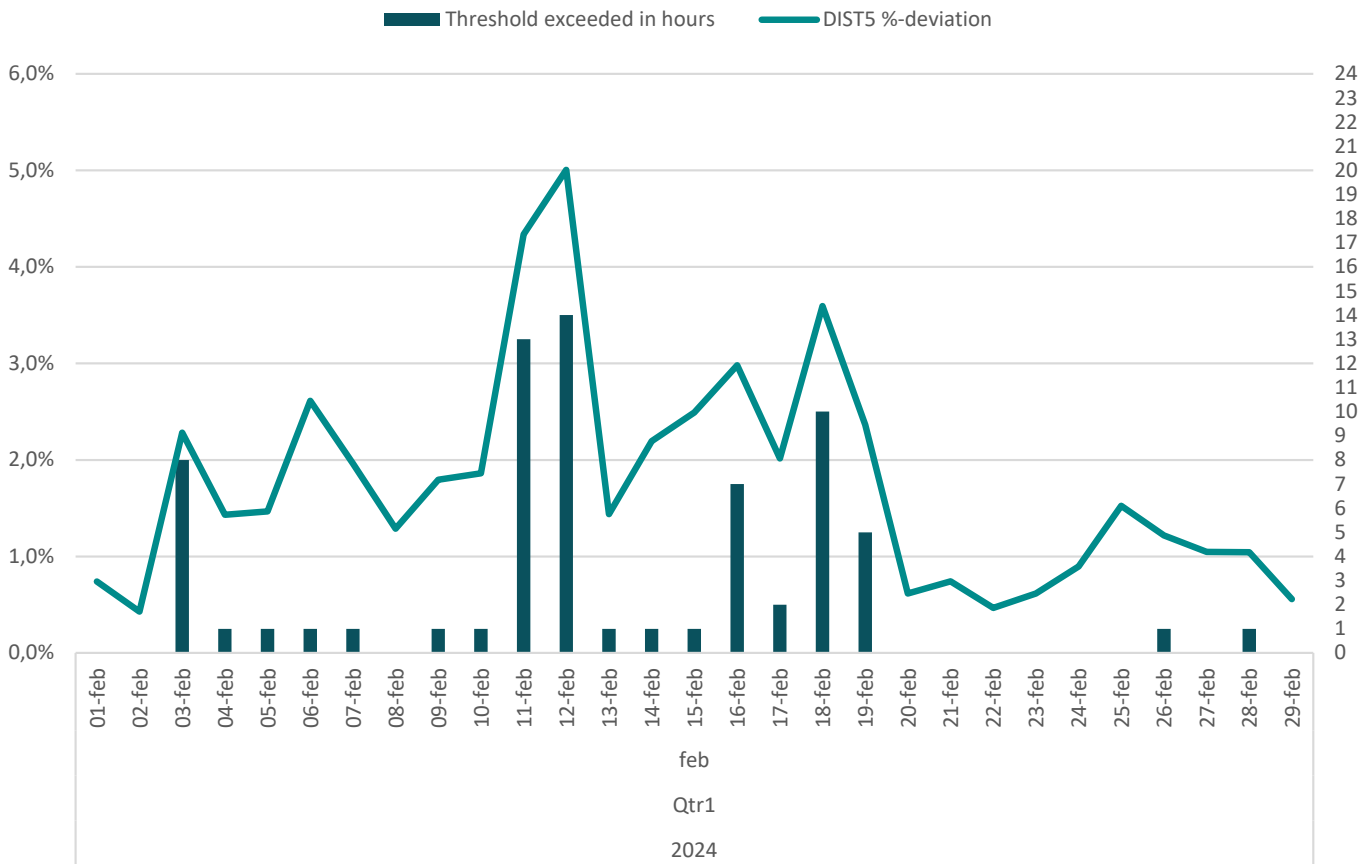
# **Distribution zone 5: Northern Jutland**

# DISTRIBUTION ZONE 5: NORTHERN JUTLAND

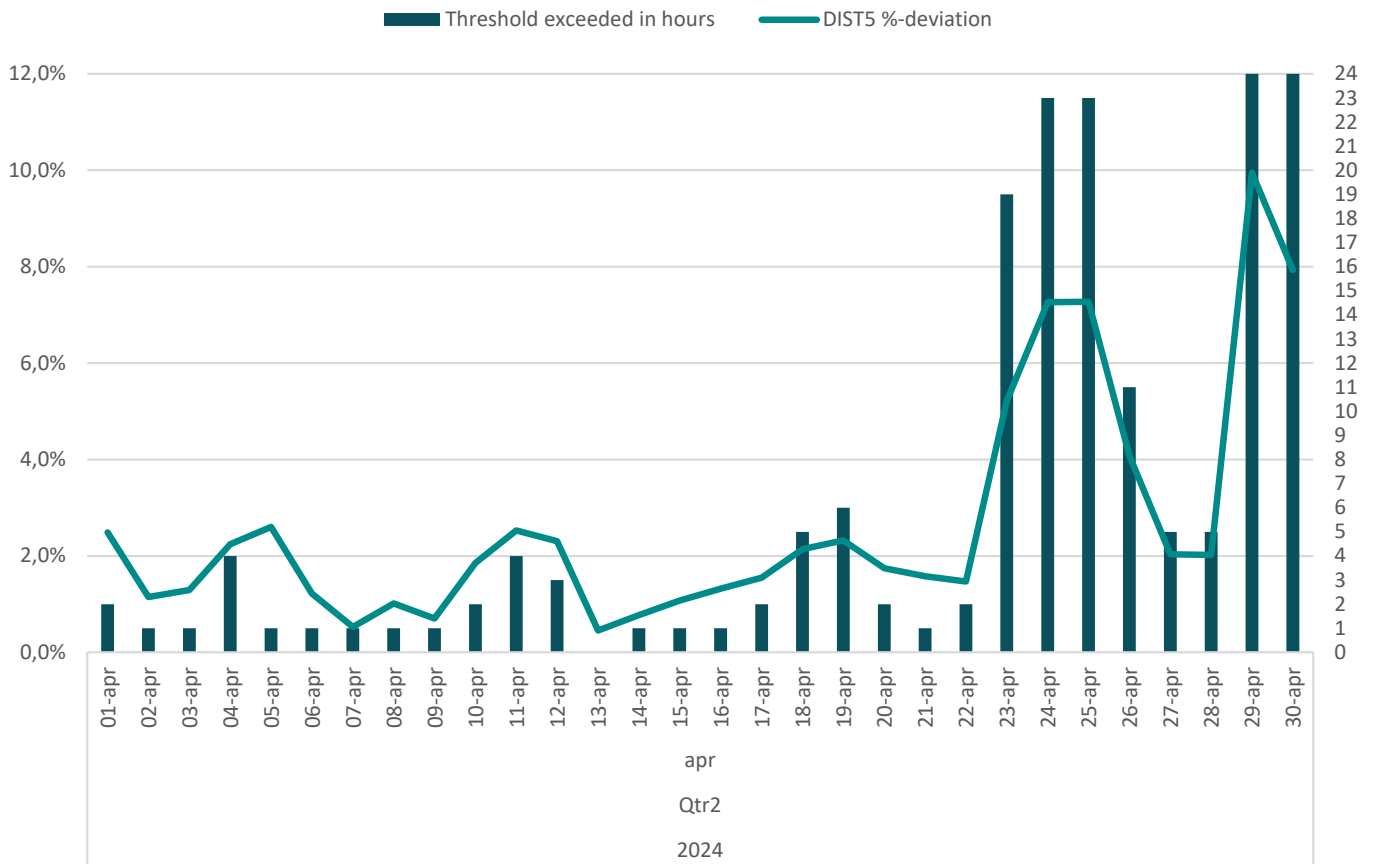




# DISTRIBUTION ZONE 5: NORTHERN JUTLAND

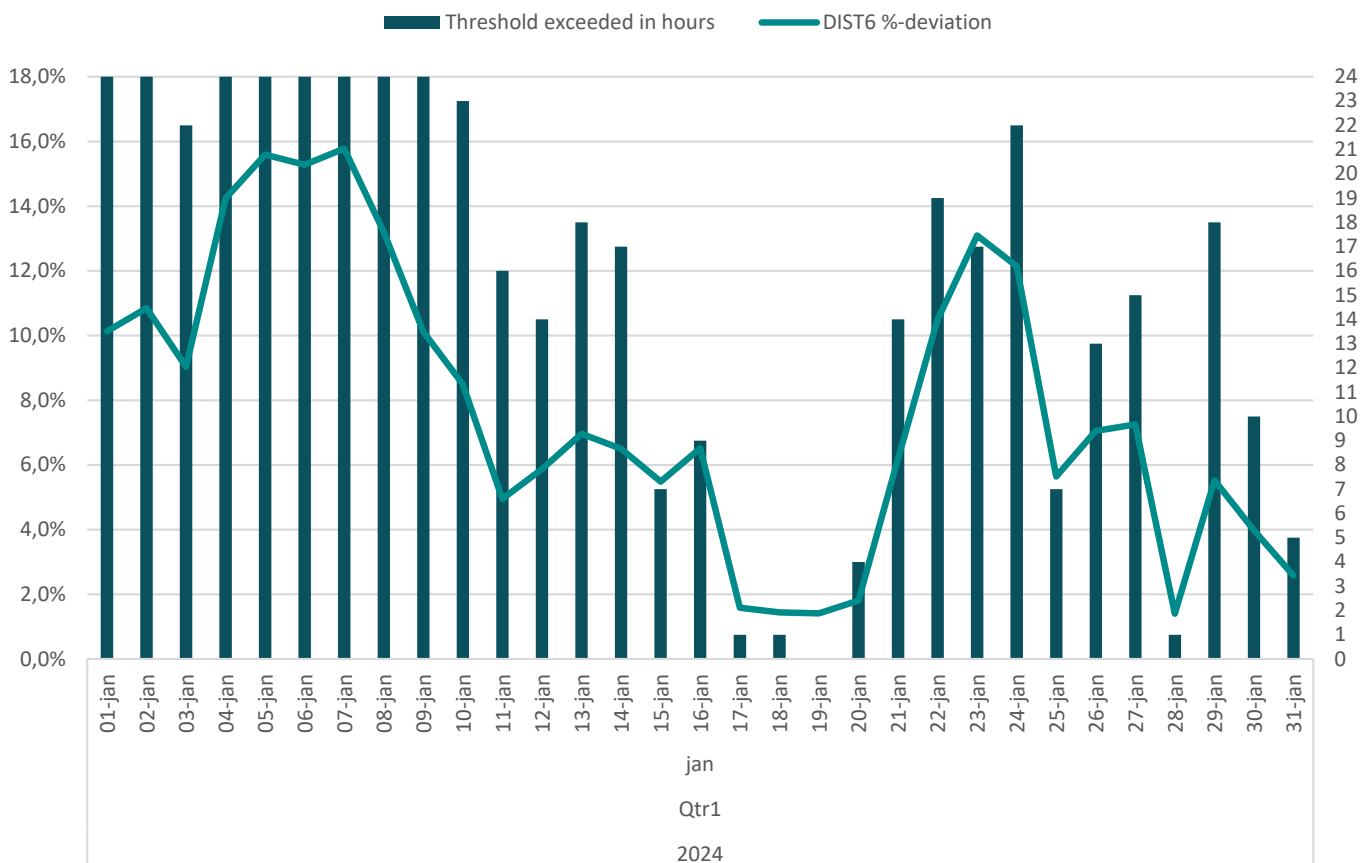
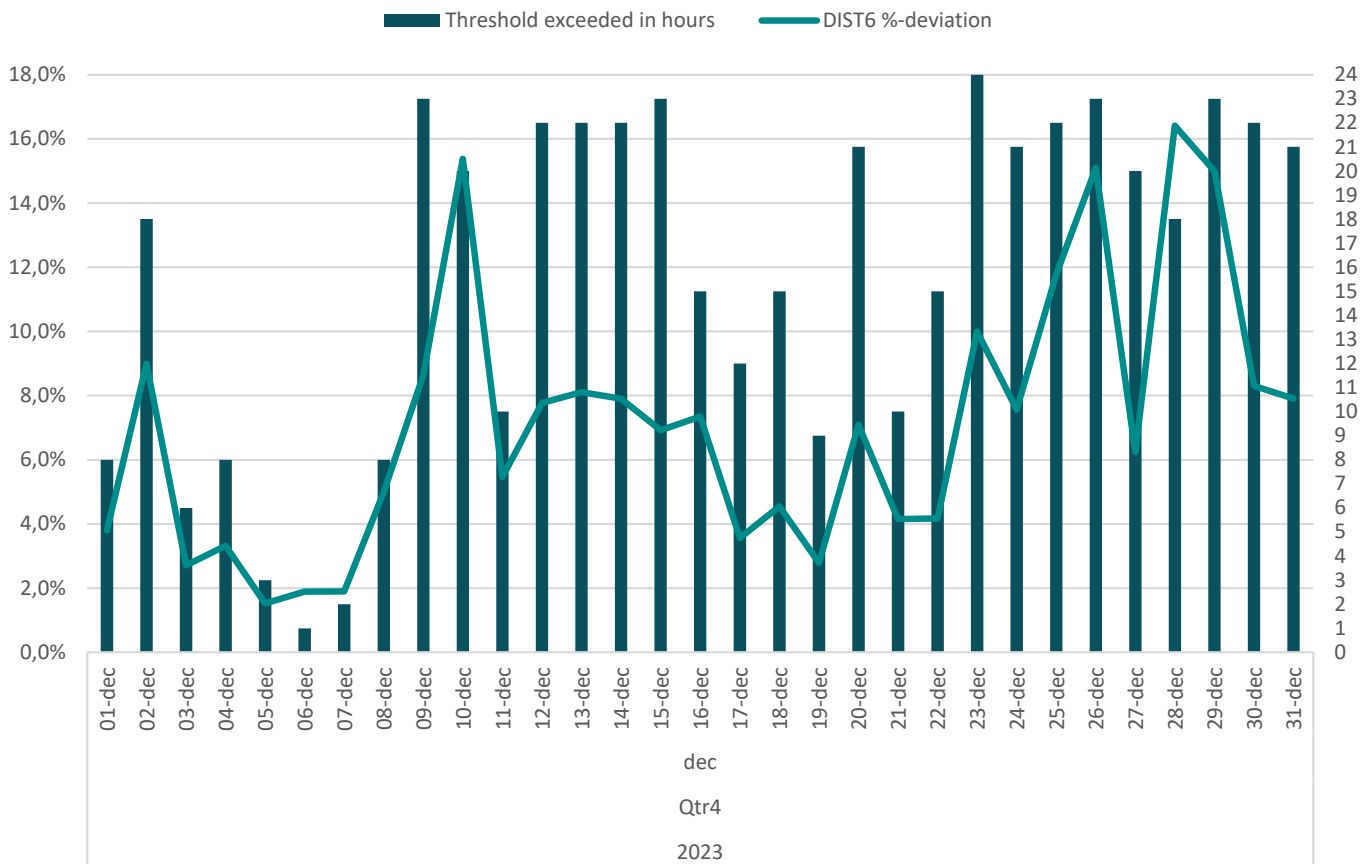


# DISTRIBUTION ZONE 5: NORTHERN JUTLAND

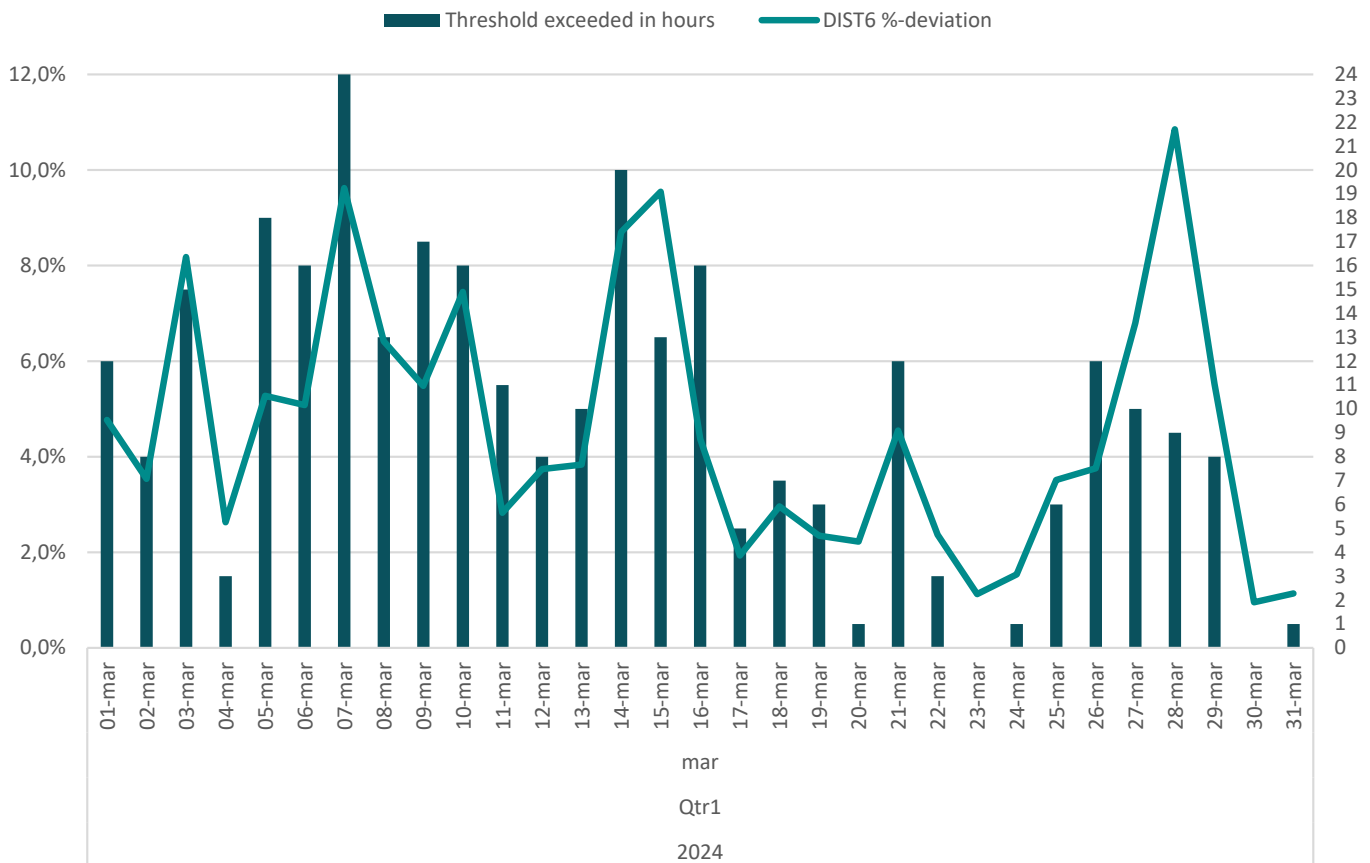
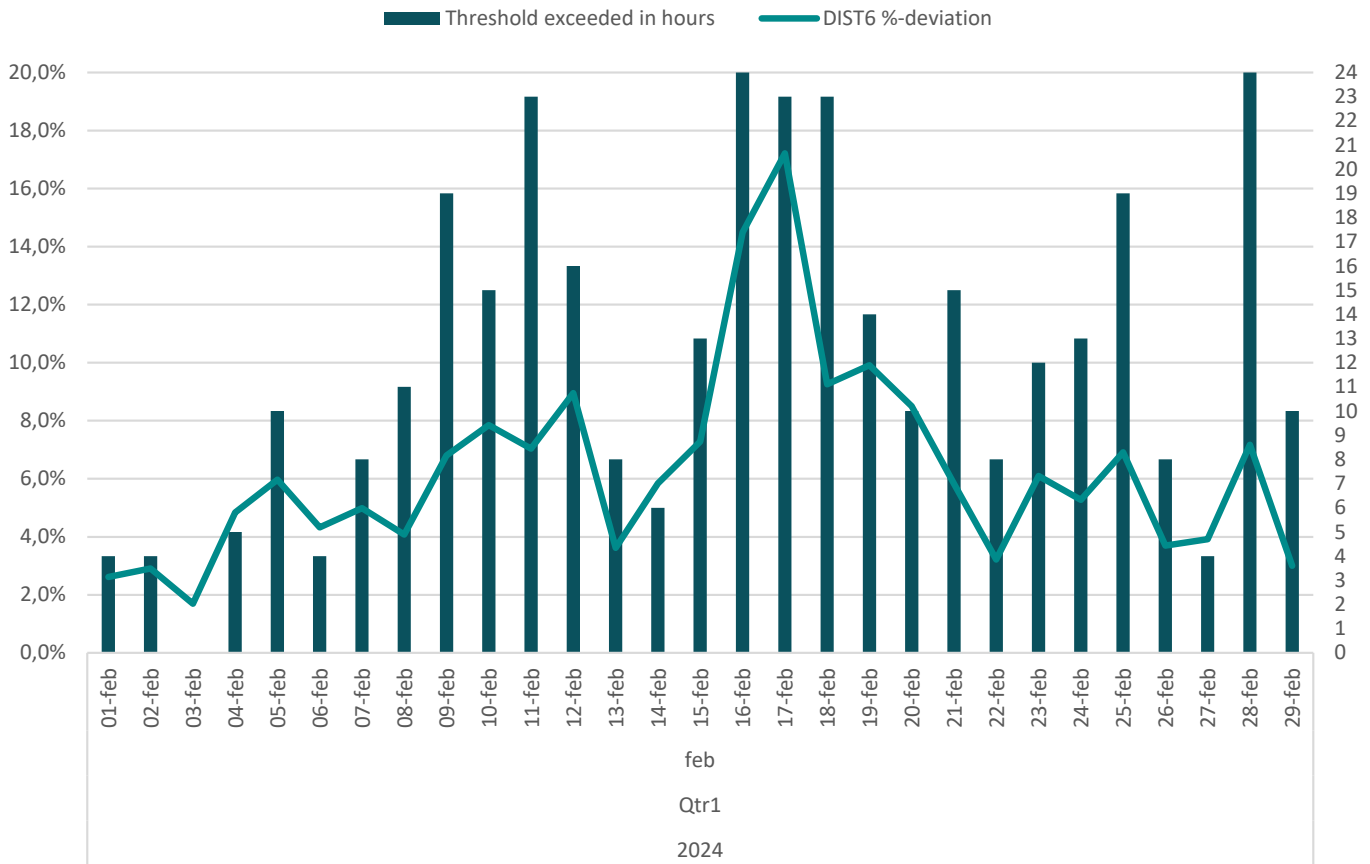


# **Distribution zone 6: Funen**

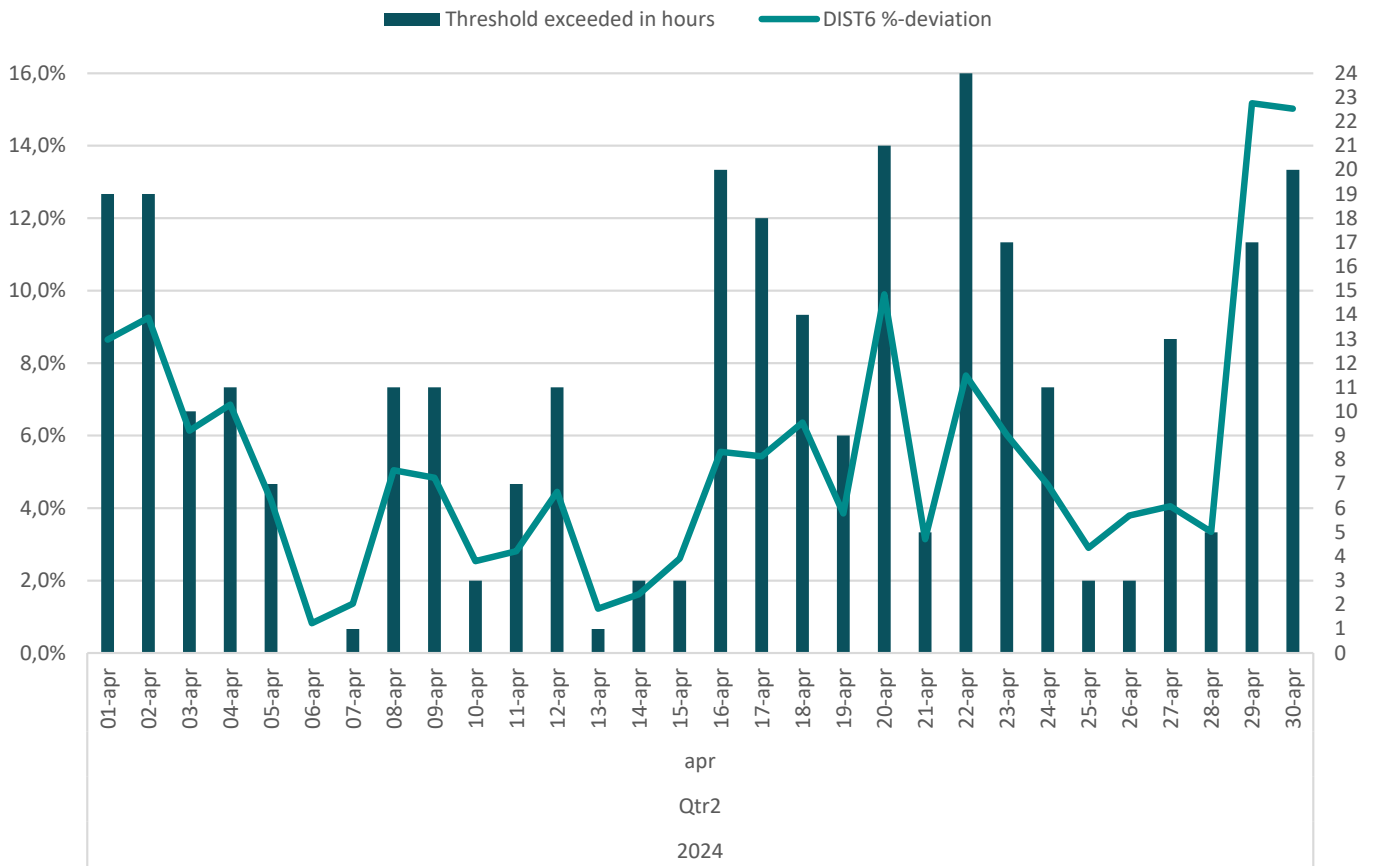
# DISTRIBUTION ZONE 6: FUNEN



# DISTRIBUTION ZONE 6: FUNEN

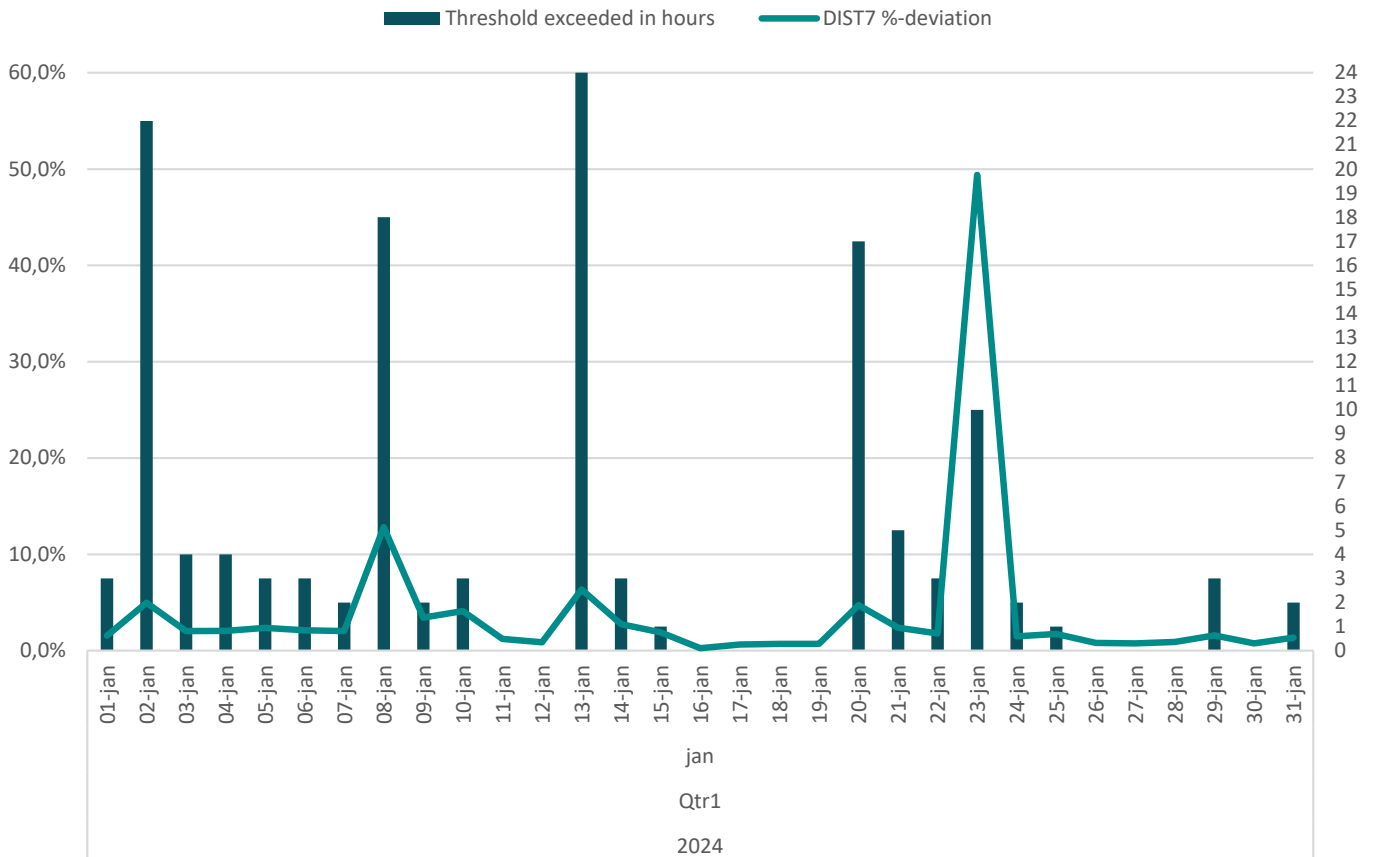
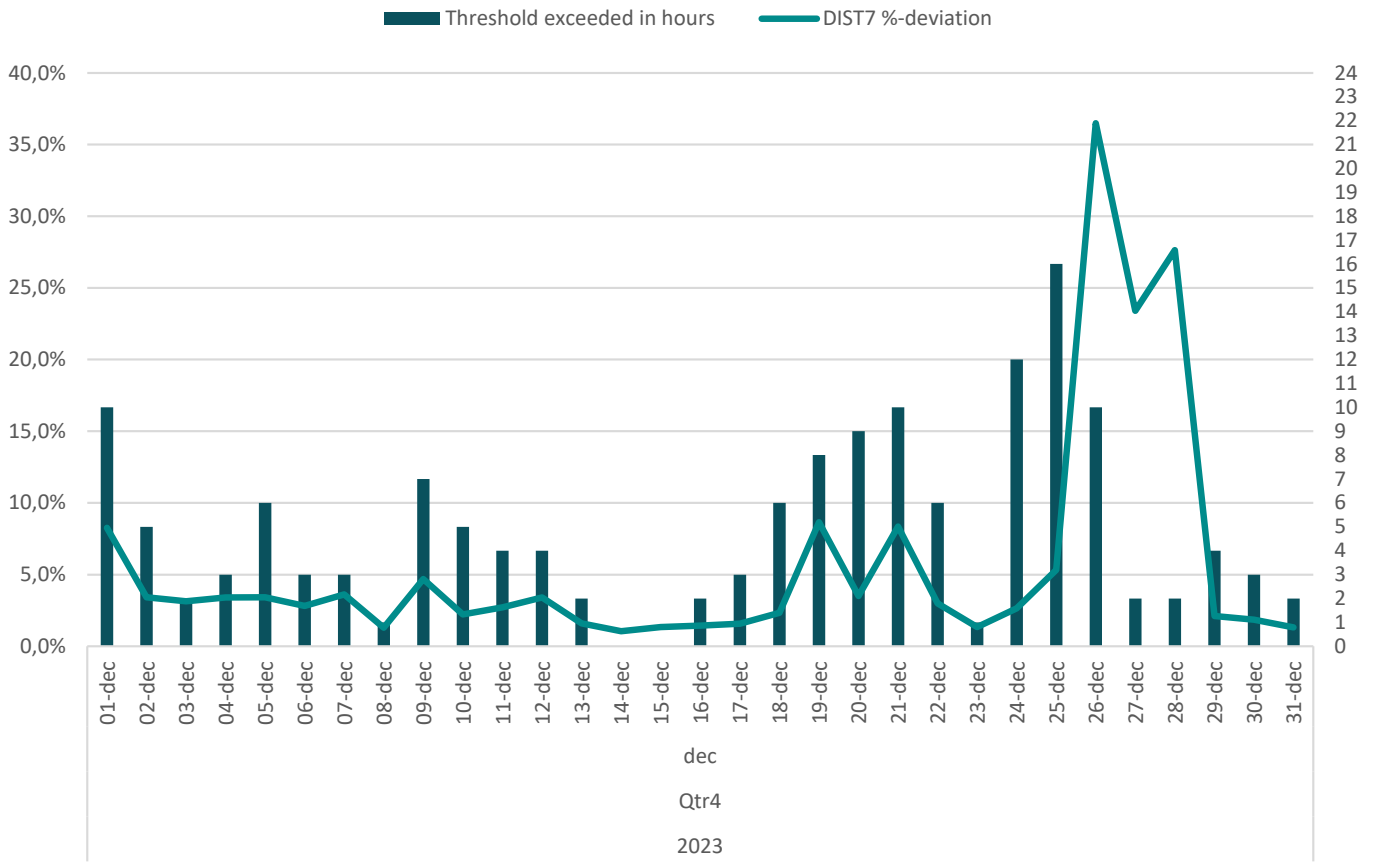


# DISTRIBUTION ZONE 6: FUNEN



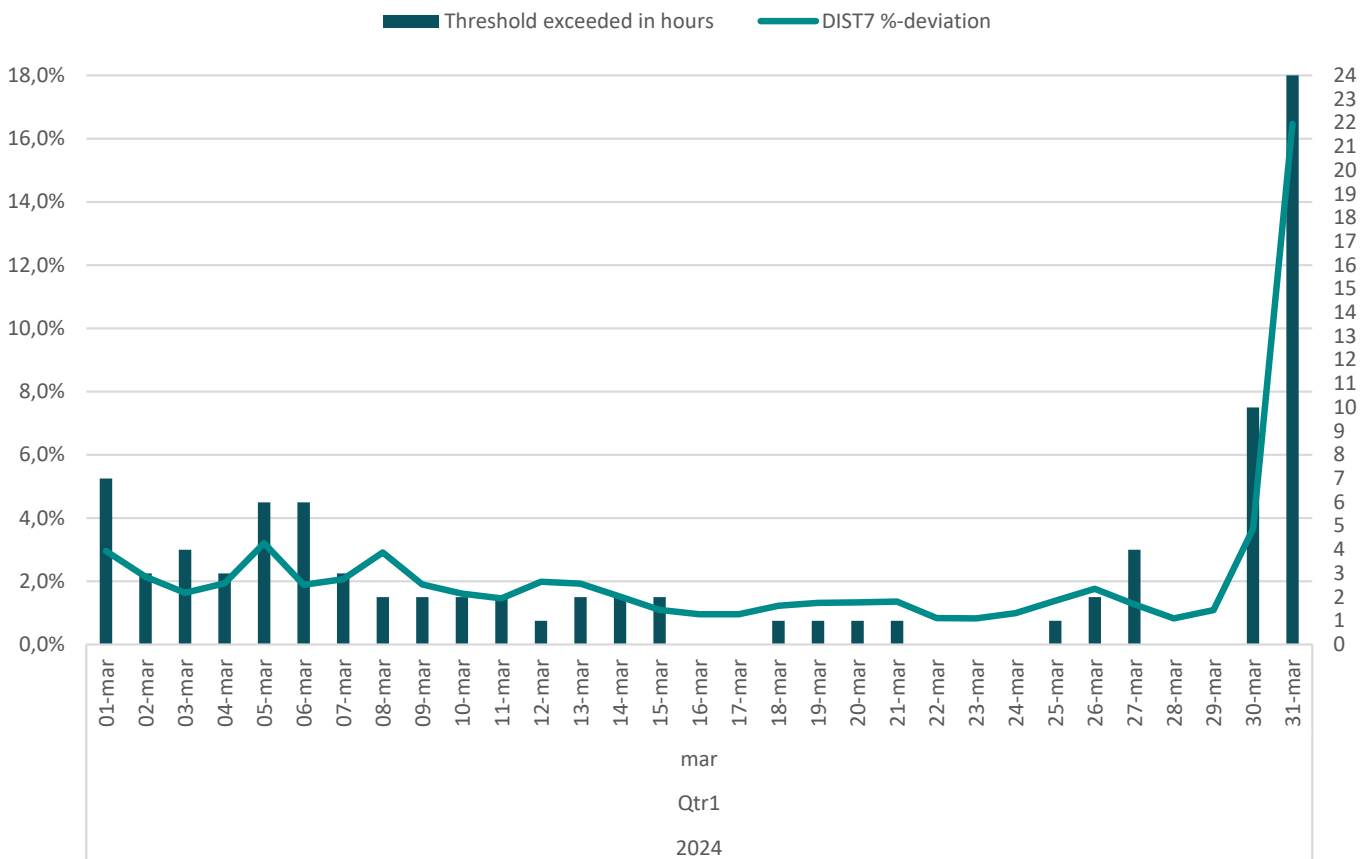
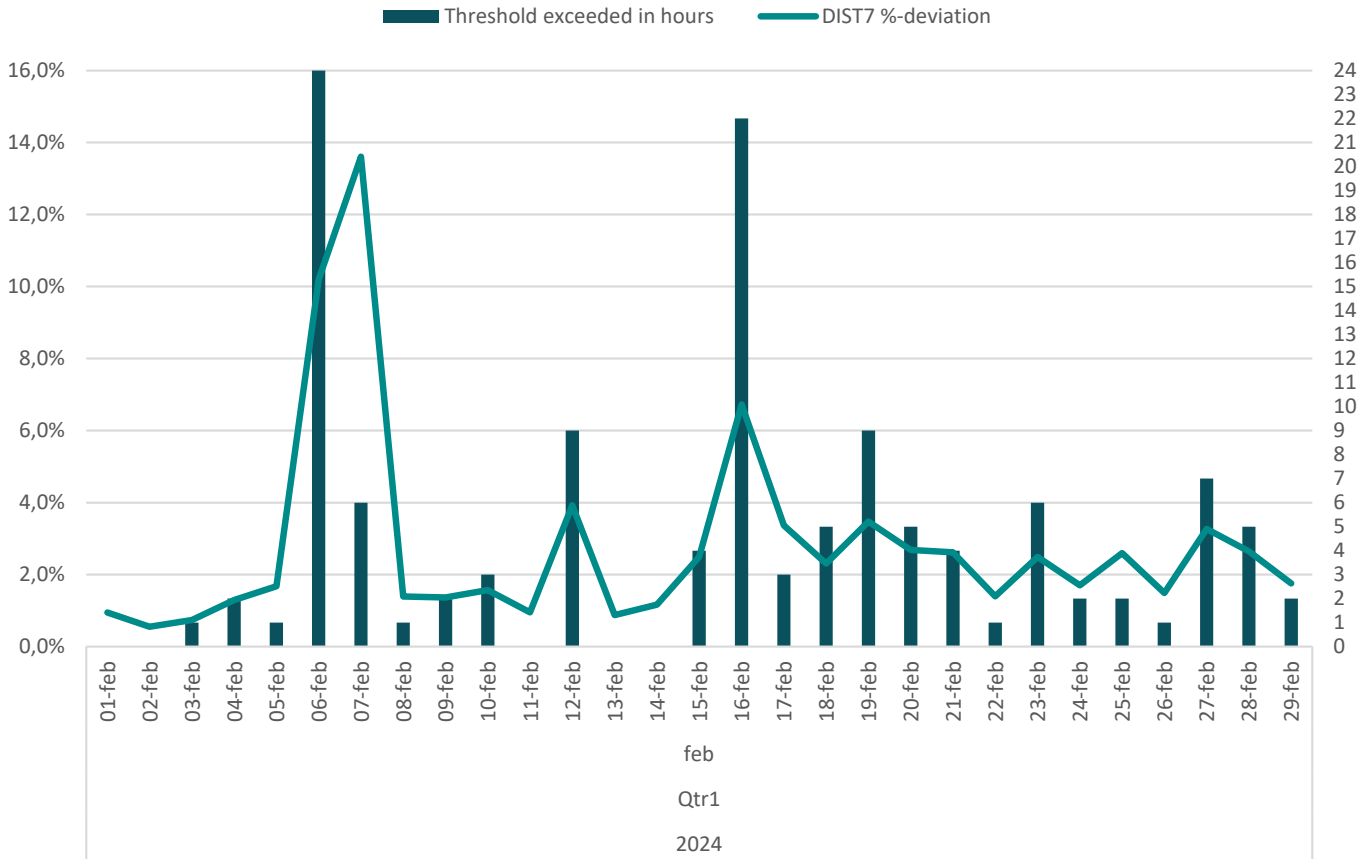
# **Distribution zone 7: Sweden**

# DISTRIBUTION ZONE 7: SWEDEN





# DISTRIBUTION ZONE 7: SWEDEN



# DISTRIBUTION ZONE 7: SWEDEN

