

TYRA 2020-2022

Status October 2020

Energinet

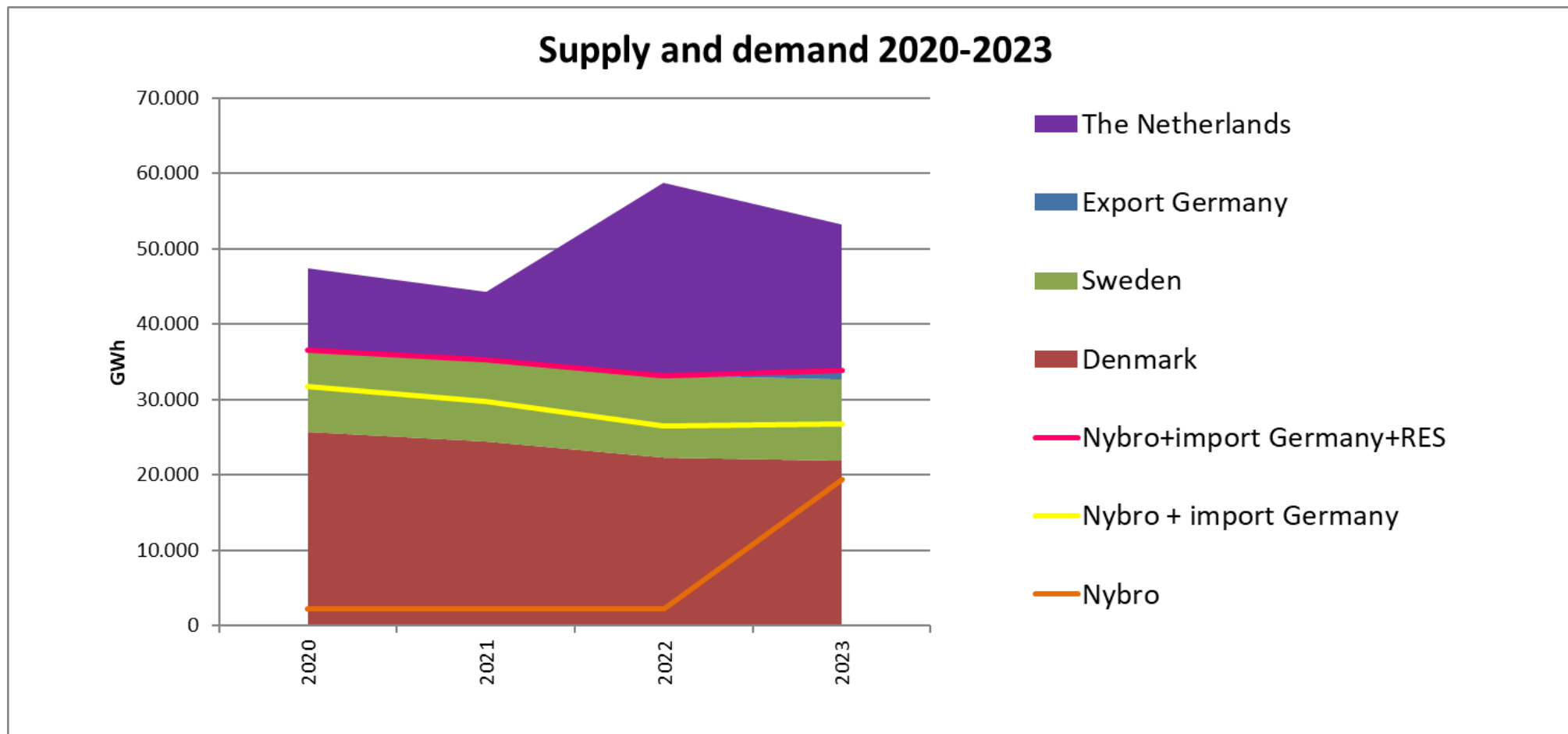
CONTENT

- General Basis/information (links)
- Analysis assumptions 2020-2023, slide 4
- Danish demand 2020-2040, slide 5
- Possible supply and demand 2020 in kWh, slide 6-9
- Possible supply and demand 2021 in kWh, slide 10-15
- Possible supply and demand 2020 in m³ (12,1 kWh/m³), slide 16-19
- Possible supply and demand 2021 in m³ (12,1 kWh/m³), slide 20-25

GENERAL BASIS/INFORMATION

1. Analysis assumptions 2020 from the Danish Energy Agency (DEA)
<https://ens.dk/service/fremskrivninger-analyser-modeller/analyseforudsætninger-til-energinet>
2. Oil and gas resources from DEA. Resources and forecasts, published September 2020
<https://ens.dk/ansvarsomraader/olie-gas/rapporter-om-olie-og-gasaktiviteter>
3. Energinet homepage <https://en.energinet.dk/Gas/Tyra/Supply-situation>
4. Energinet homepage <https://www2.gasmarketmessage.dk/SitePages/WelcomePublic.aspx>
5. Total homepage <https://www.dk.total.com/total-denmark/better-energy-projects-denmark/tyra-redevelopment-tyra-gas-field-processing-90-nations-gas-production>
6. Gas Storage Denmark <https://gasstorage.dk/>
7. ENTSOG Transparency platform <https://transparency.entsog.eu/>
8. PRISMA <https://corporate.prisma-capacity.eu/>
9. Energinet homepage Safe Storage level <https://en.energinet.dk/Gas/Tyra/Safe-storage-level>

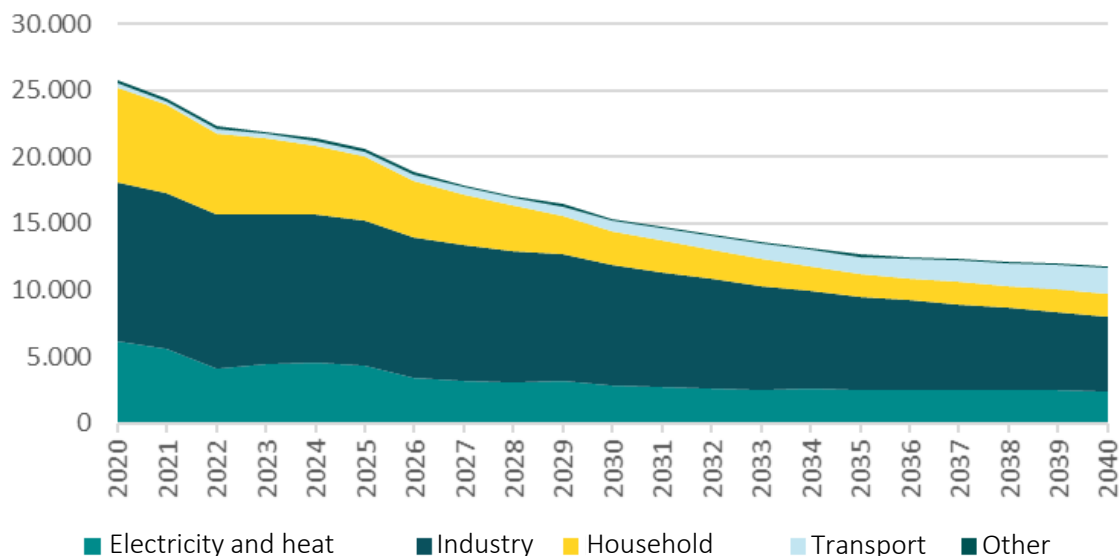
ANALYSIS ASSUMPTIONS 2020, SUPPLY AND DEMAND EXCL. BALTIC PIPE (DEA)



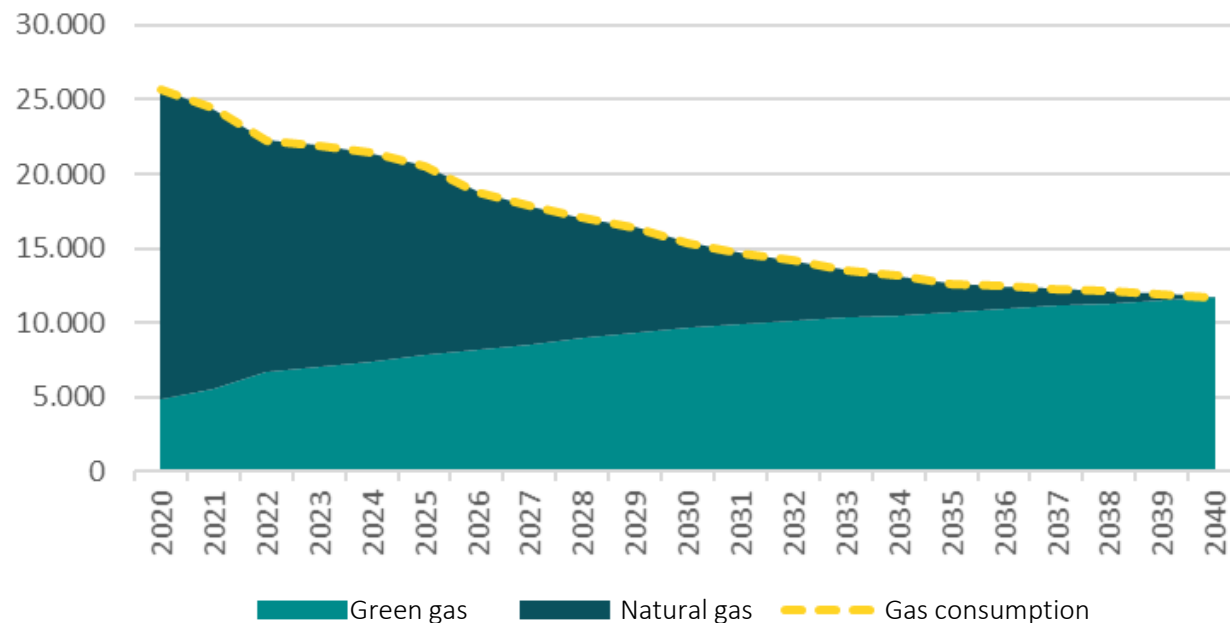
<https://ens.dk/service/fremskrivninger-analyser-modeller/analyseforudsætninger-til-energinet>

ANALYSIS ASSUMPTIONS 2020, DEMAND DENMARK (DEA)

Total gas consumption Denmark in GWh



Split of gas consumption Denmark in GWh



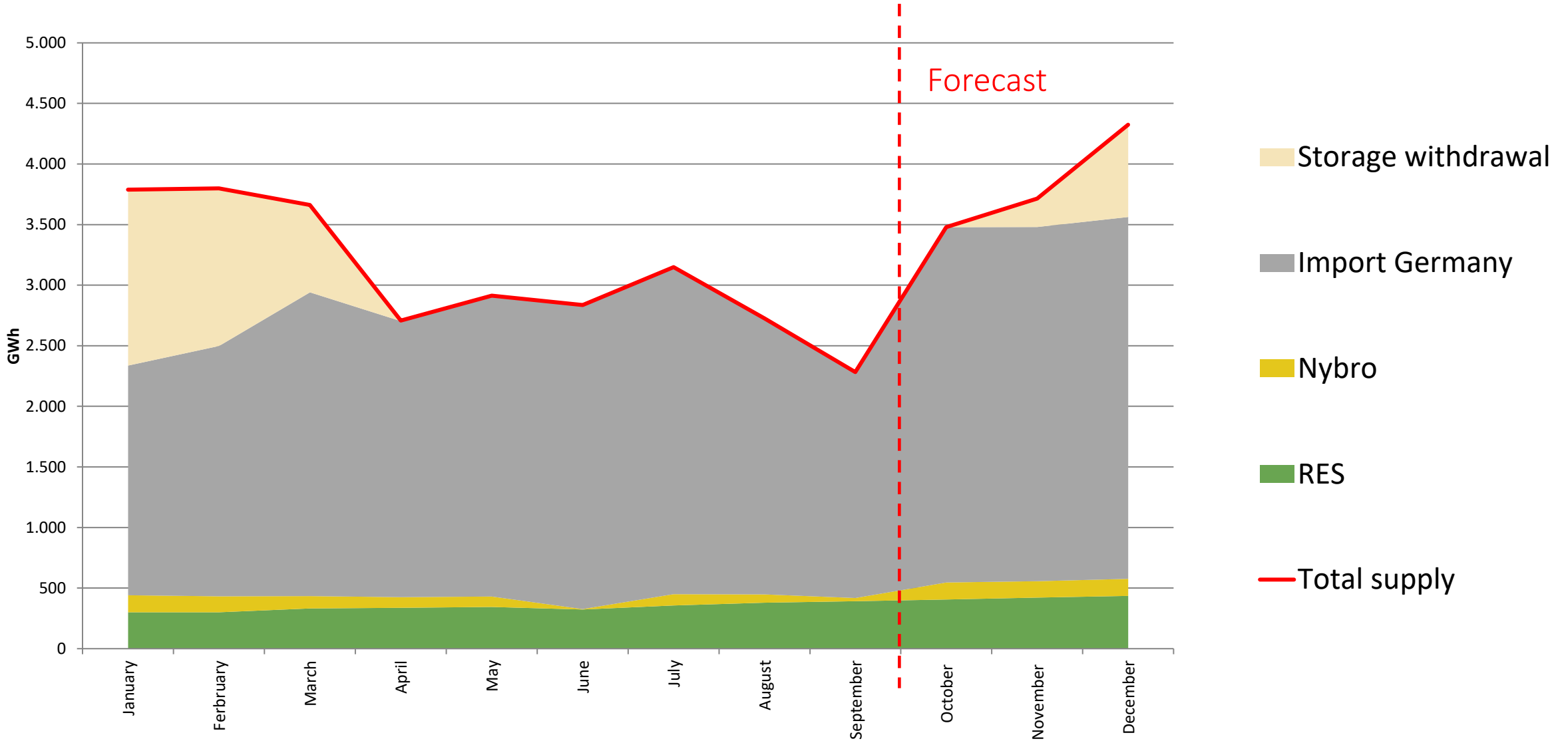
<https://ens.dk/service/fremskrivninger-analyser-modeller/analyseforudsætninger-til-energinet>

TYRA 2020-2022

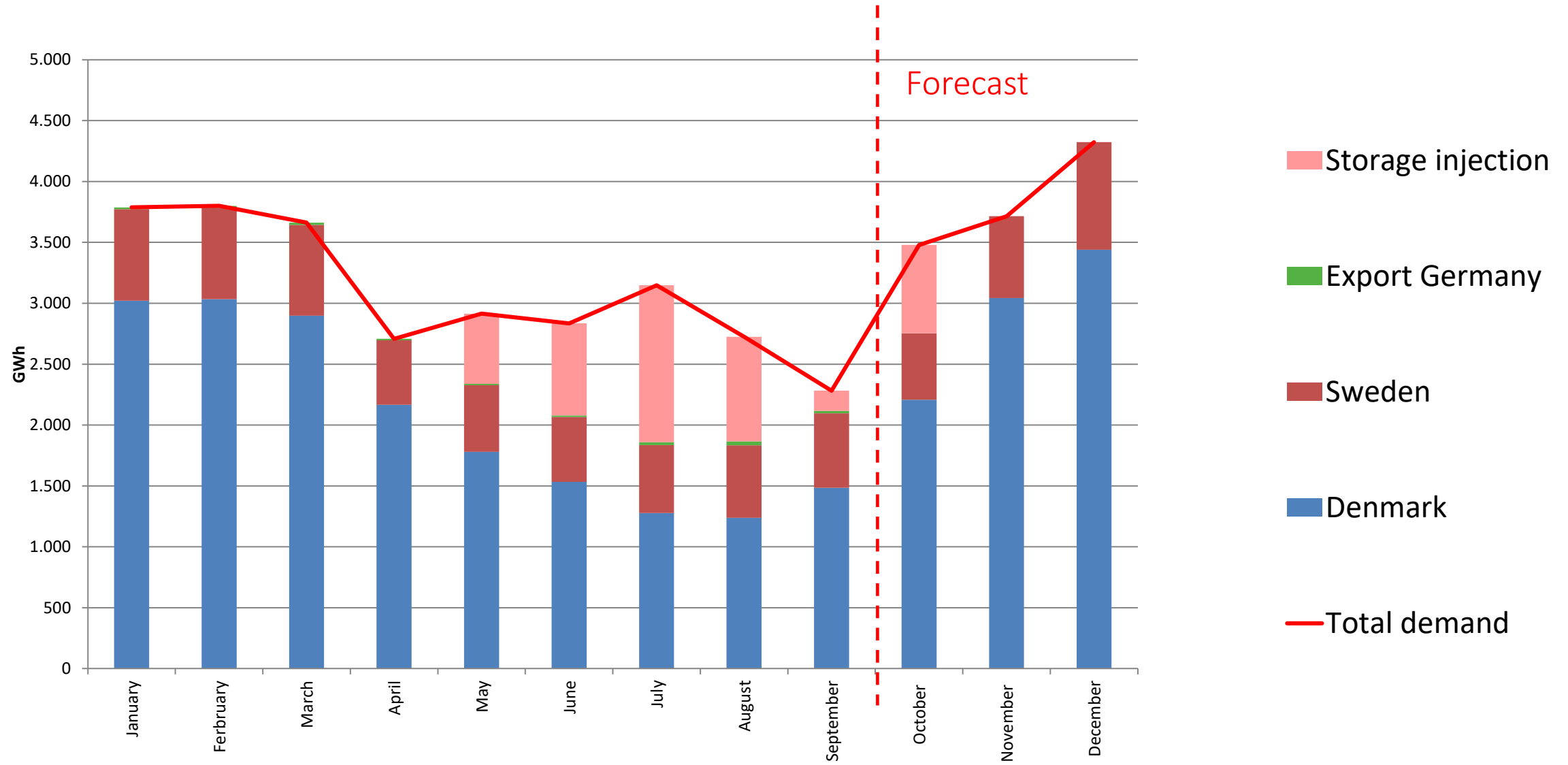
Possible supply and demand 2020

In kWh

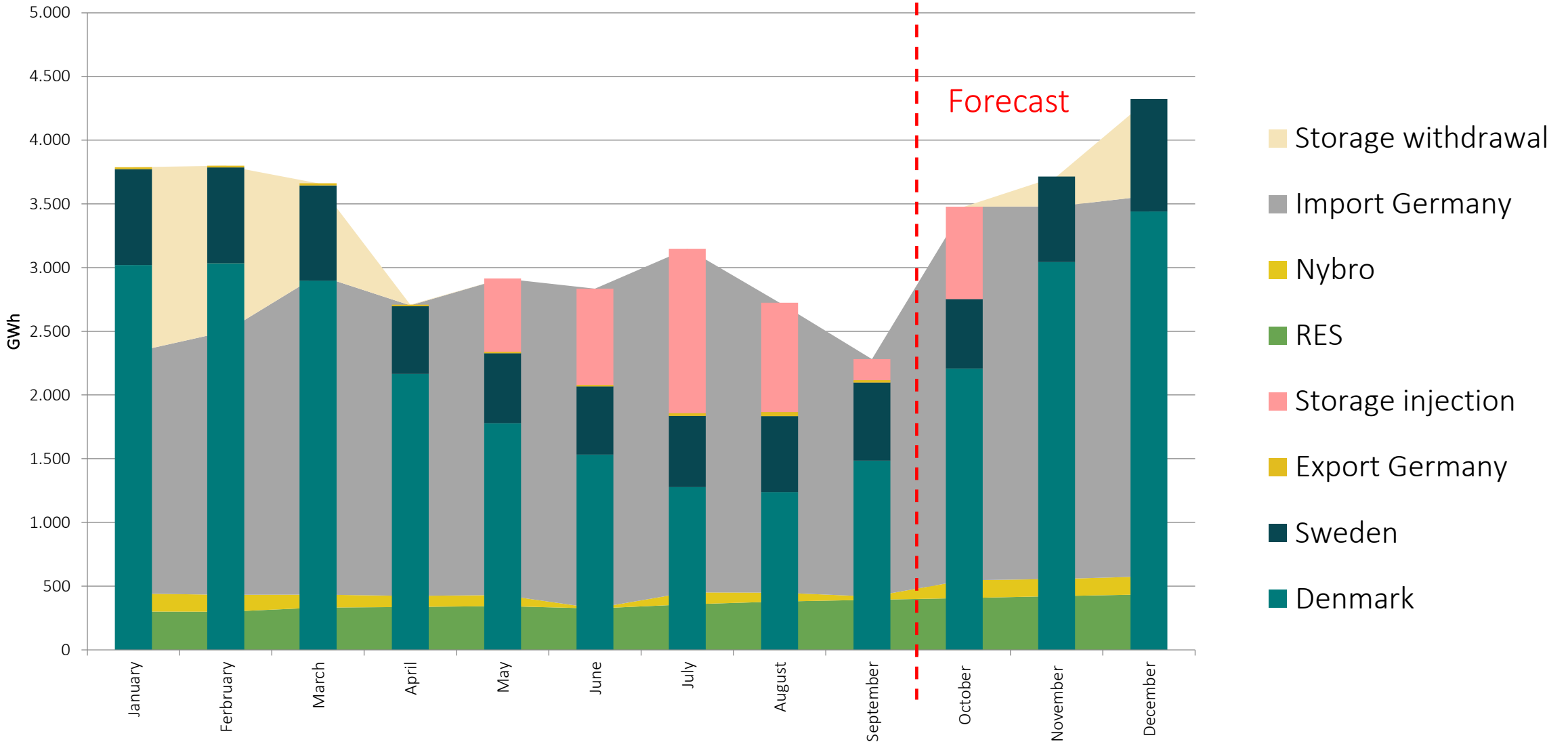
POSSIBLE SUPPLY 2020



POSSIBLE DEMAND 2020

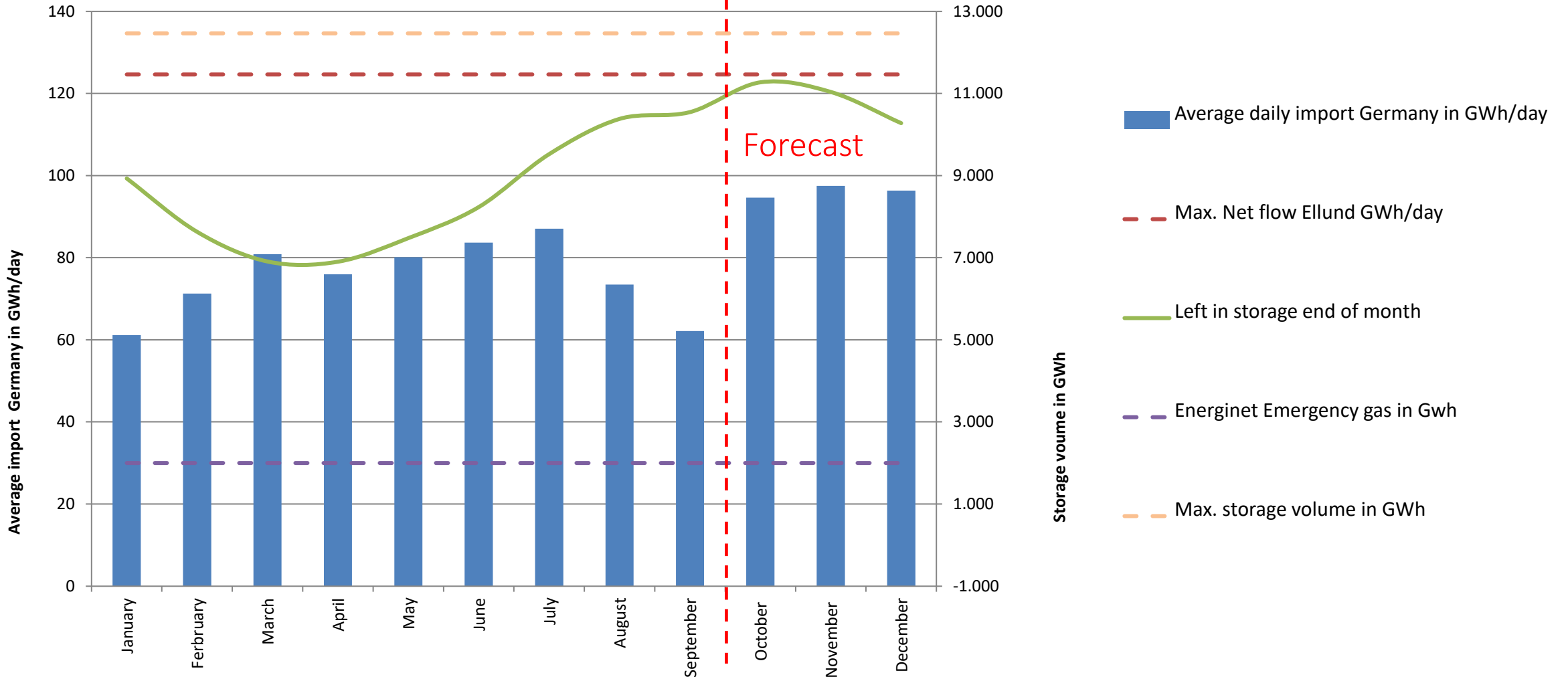


POSSIBLE SUPPLY AND DEMAND 2020



POSSIBLE SUPPLY AND DEMAND 2020

Daily import Germany and storage volume

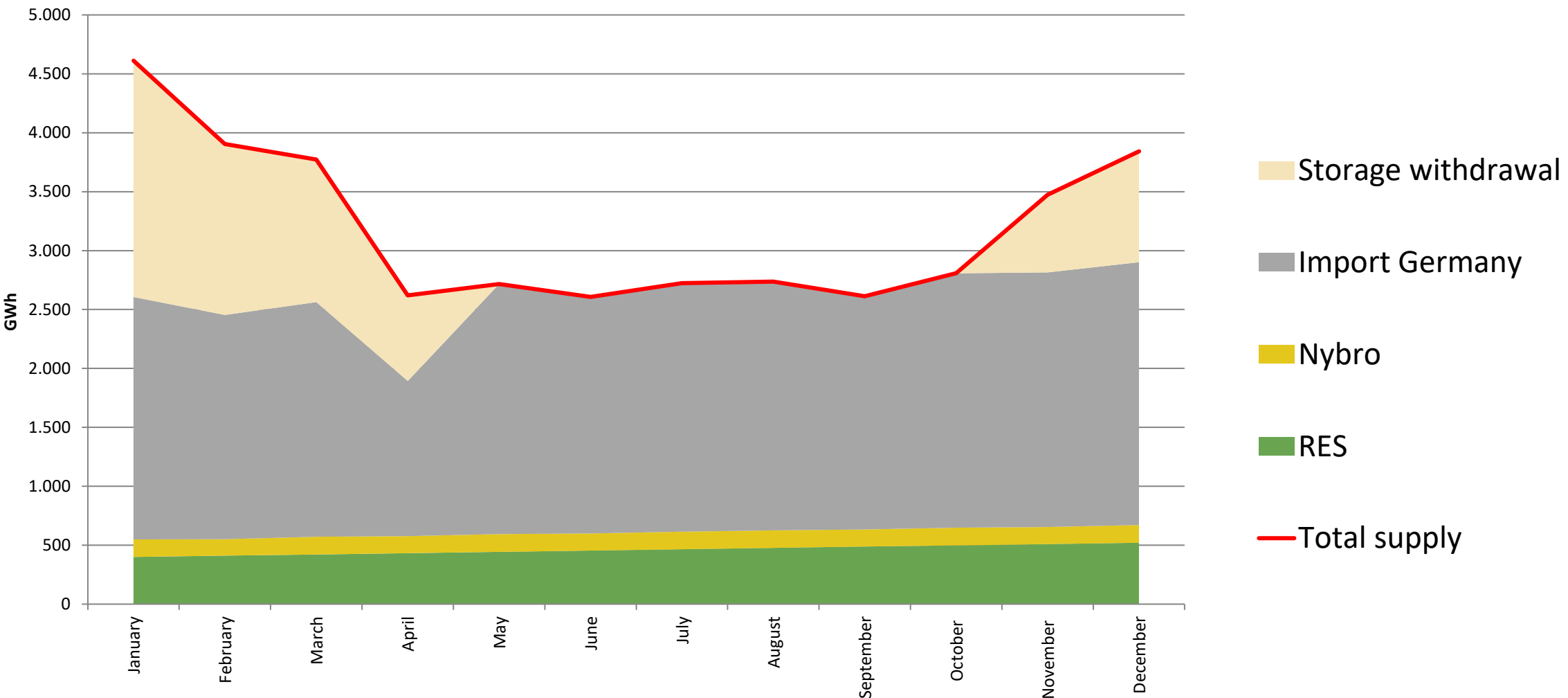


TYRA 2020-2022

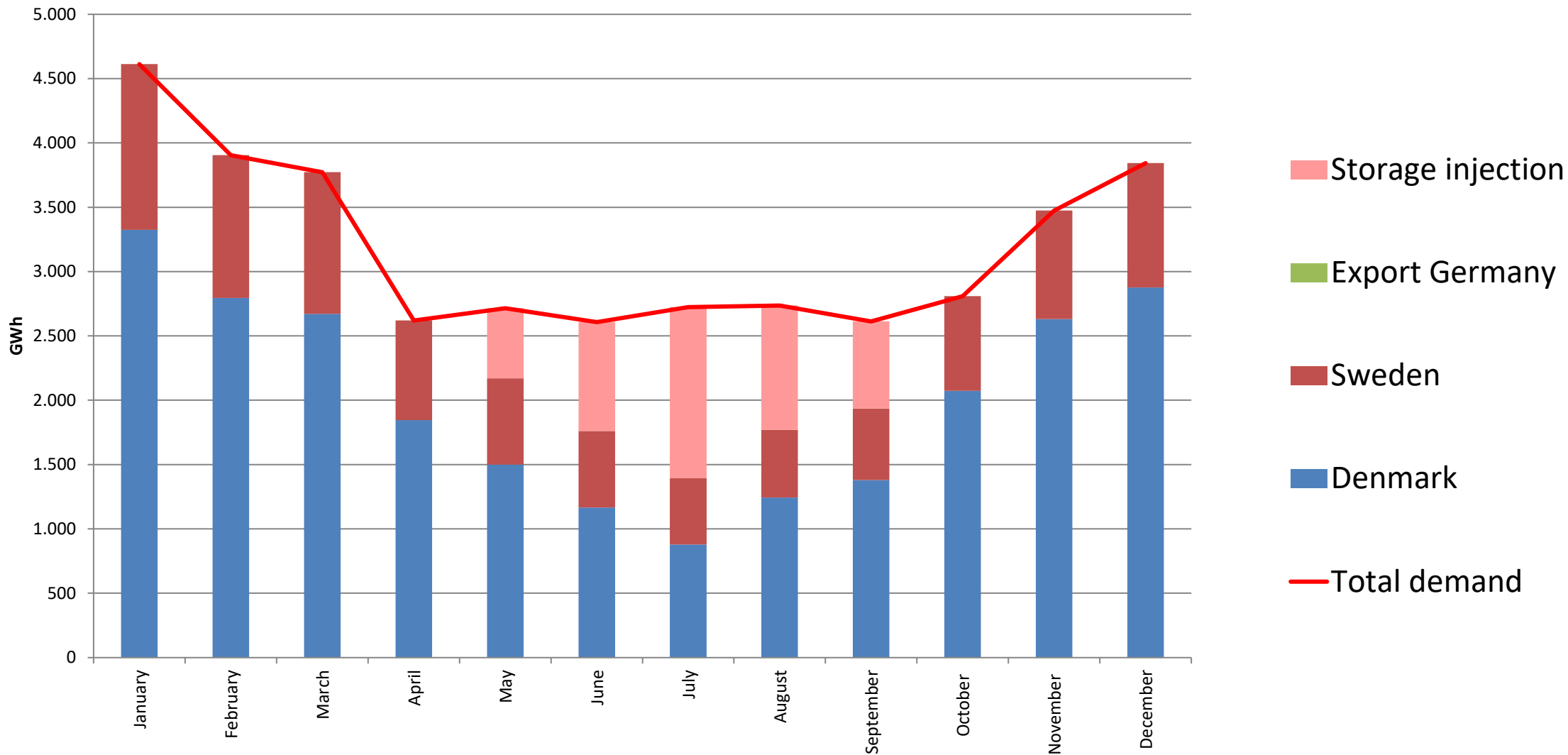
Possible supply and demand 2021

In kWh

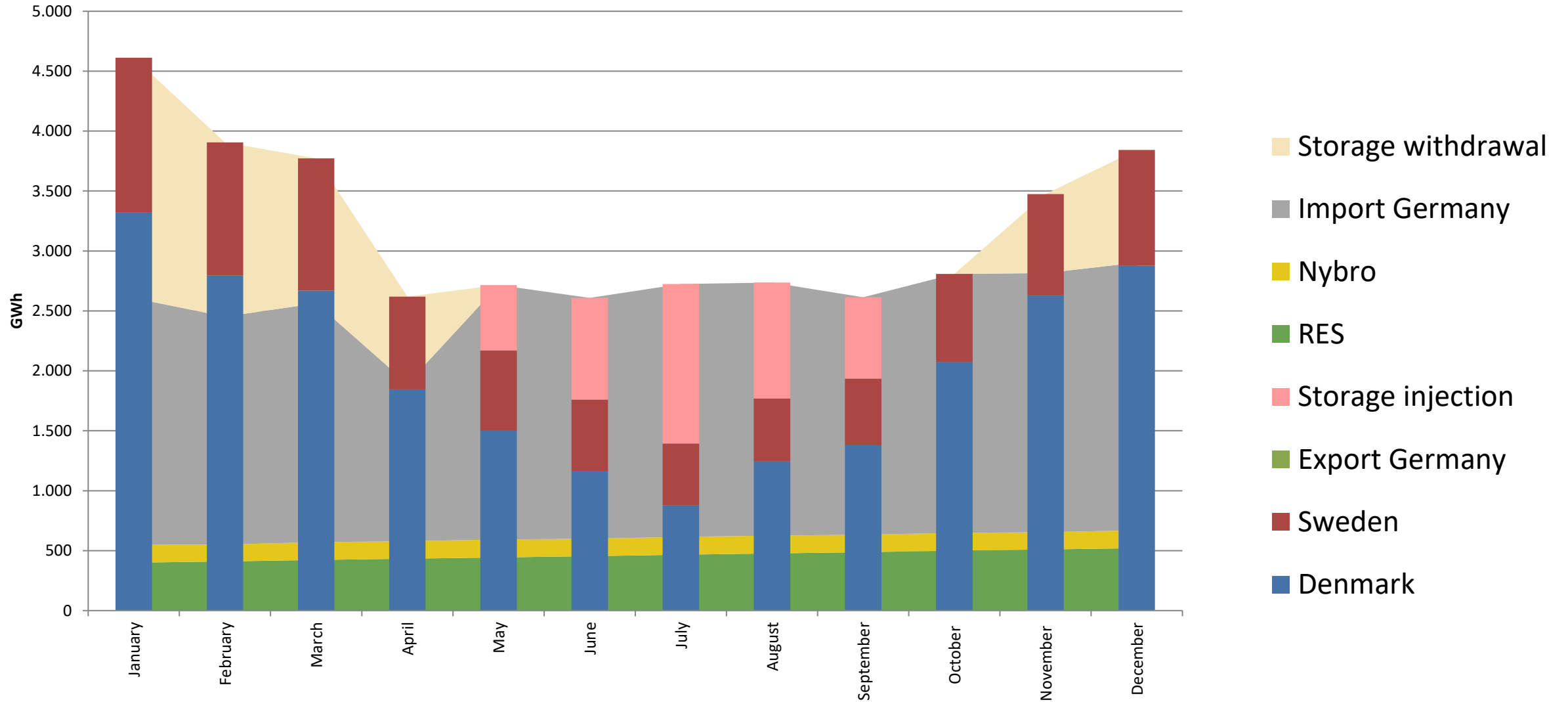
POSSIBLE SUPPLY 2021



POSSIBLE DEMAND 2021

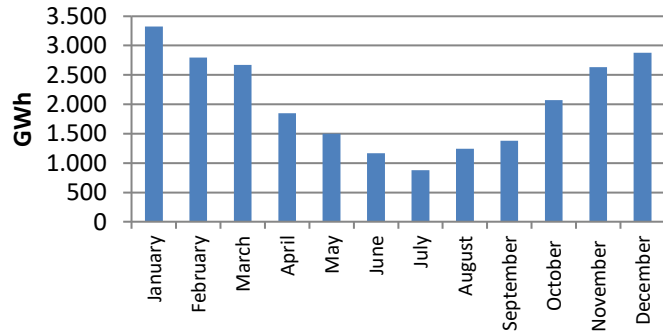


POSSIBLE SUPPLY AND DEMAND 2021

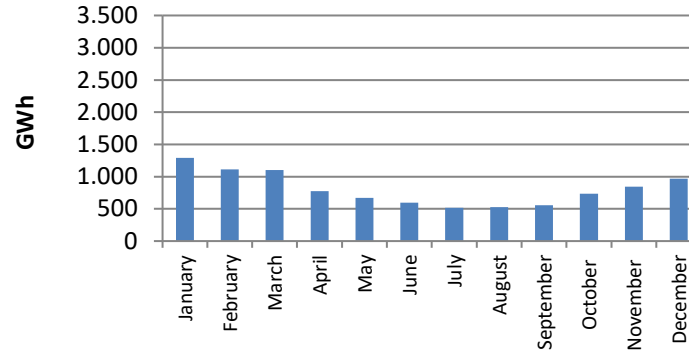


POSSIBLE SUPPLY AND DEMAND 2021

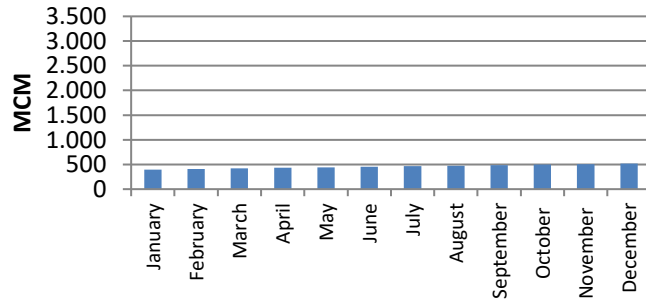
Denmark



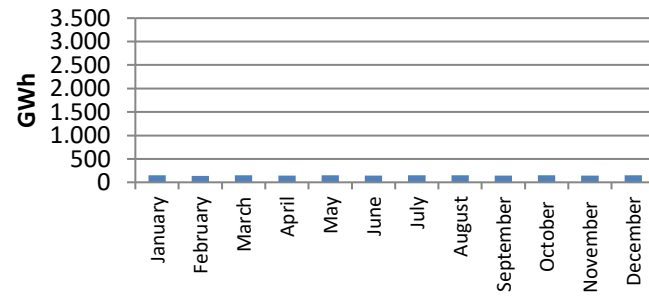
Sweden



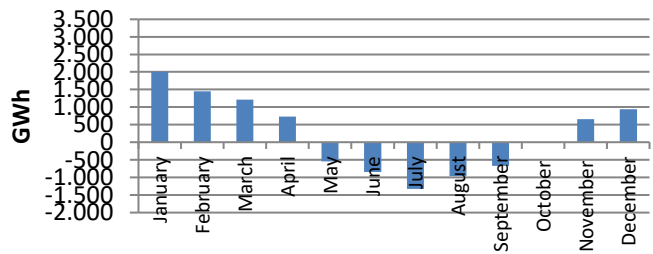
Entry RES



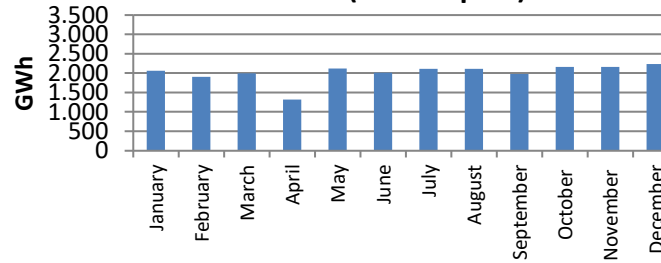
Nybro (South Arne)



Storage facilities

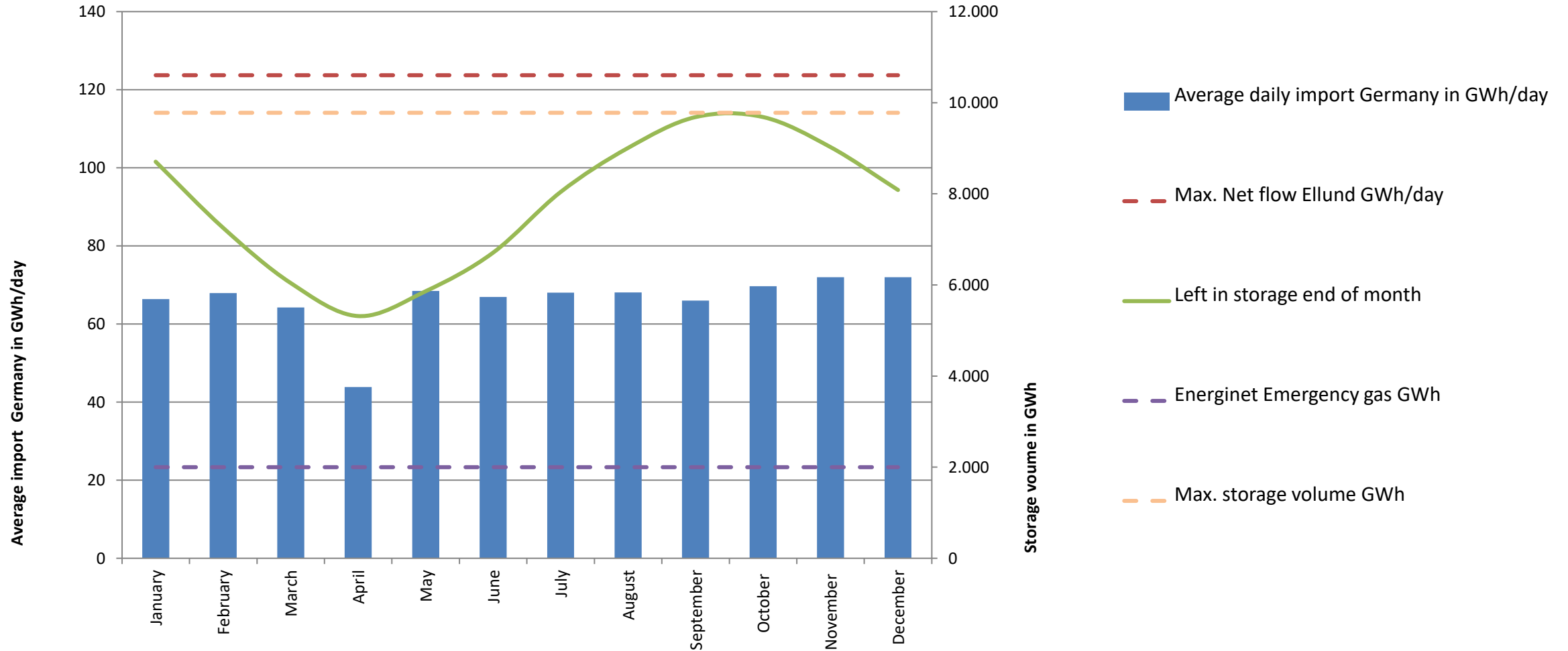


Net flow Ellund (+ for import)



POSSIBLE DAILY IMPORT GERMANY AND STORAGE VOLUME 2021

Daily import Germany and storage volume

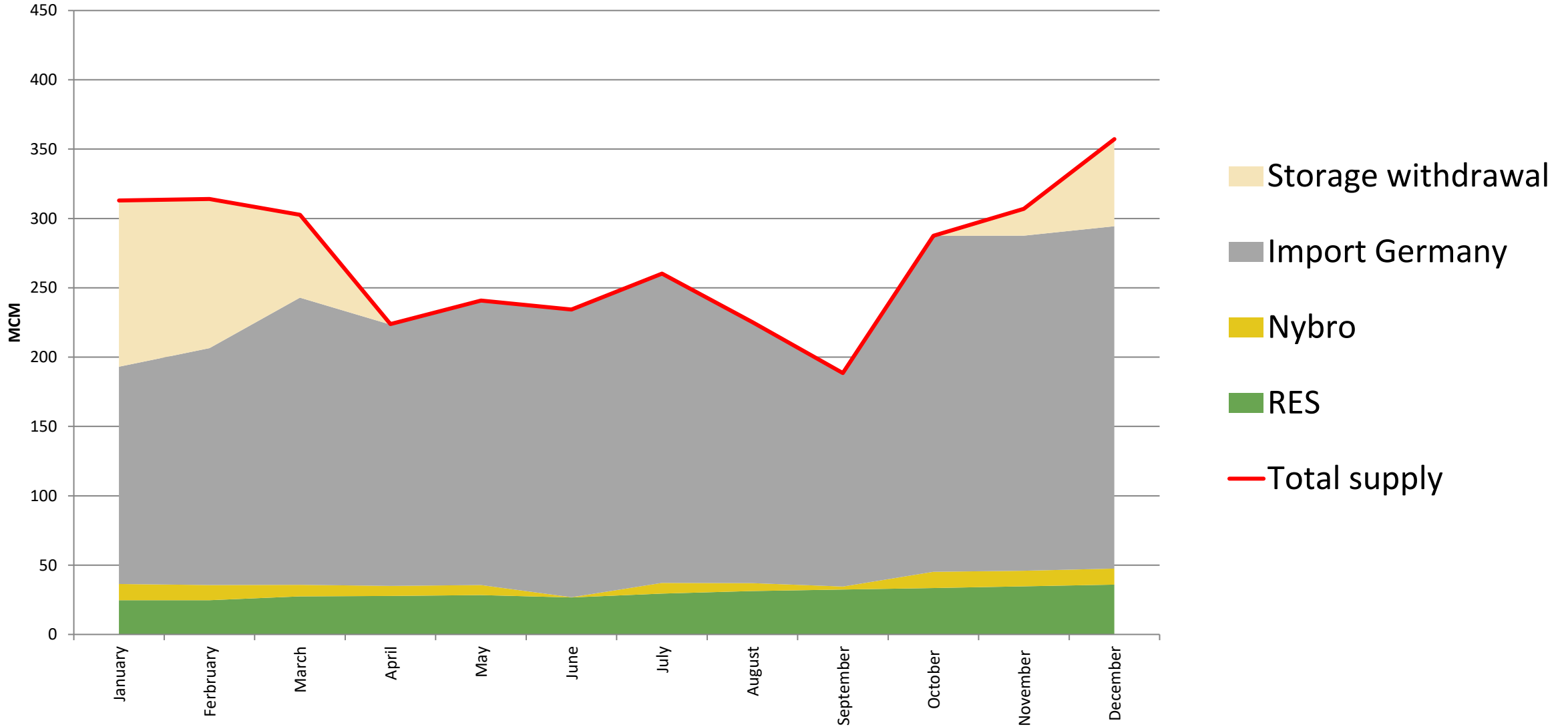


TYRA 2020-2022

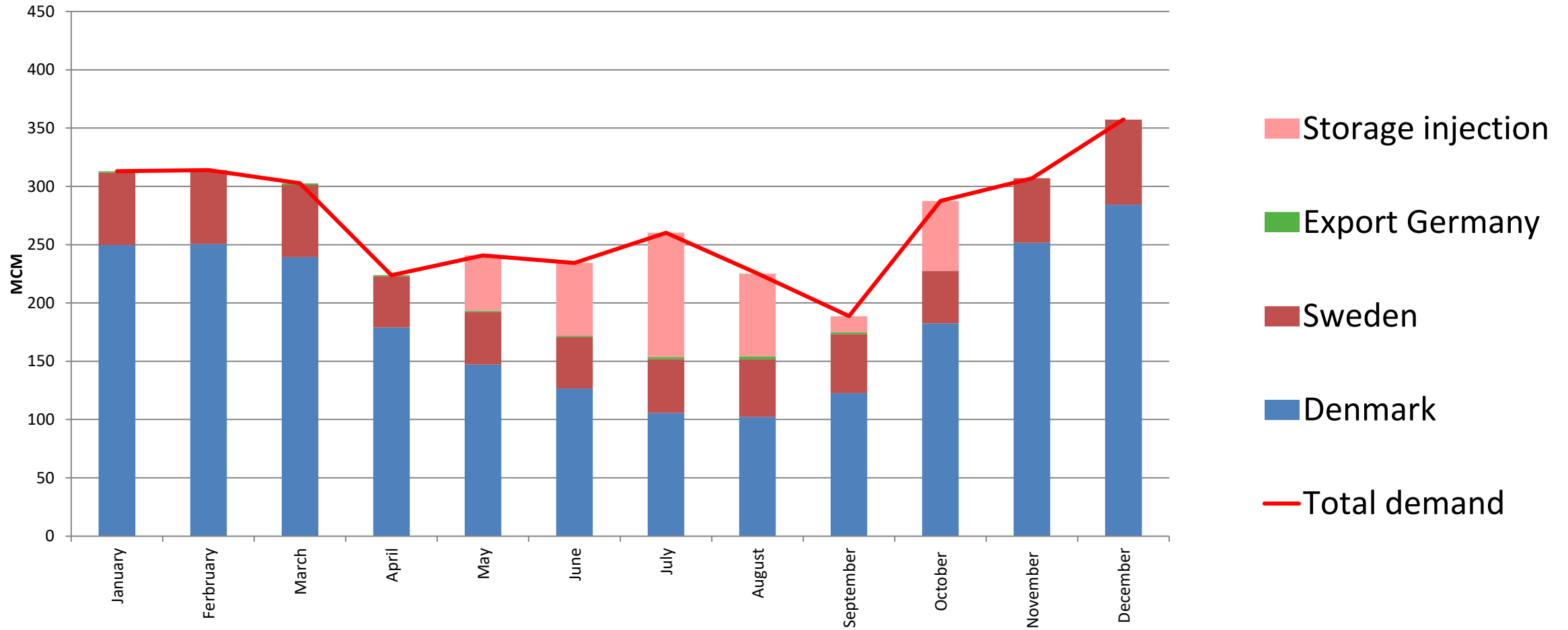
Possible supply and demand 2020

1 m³ = 12,1 kWh

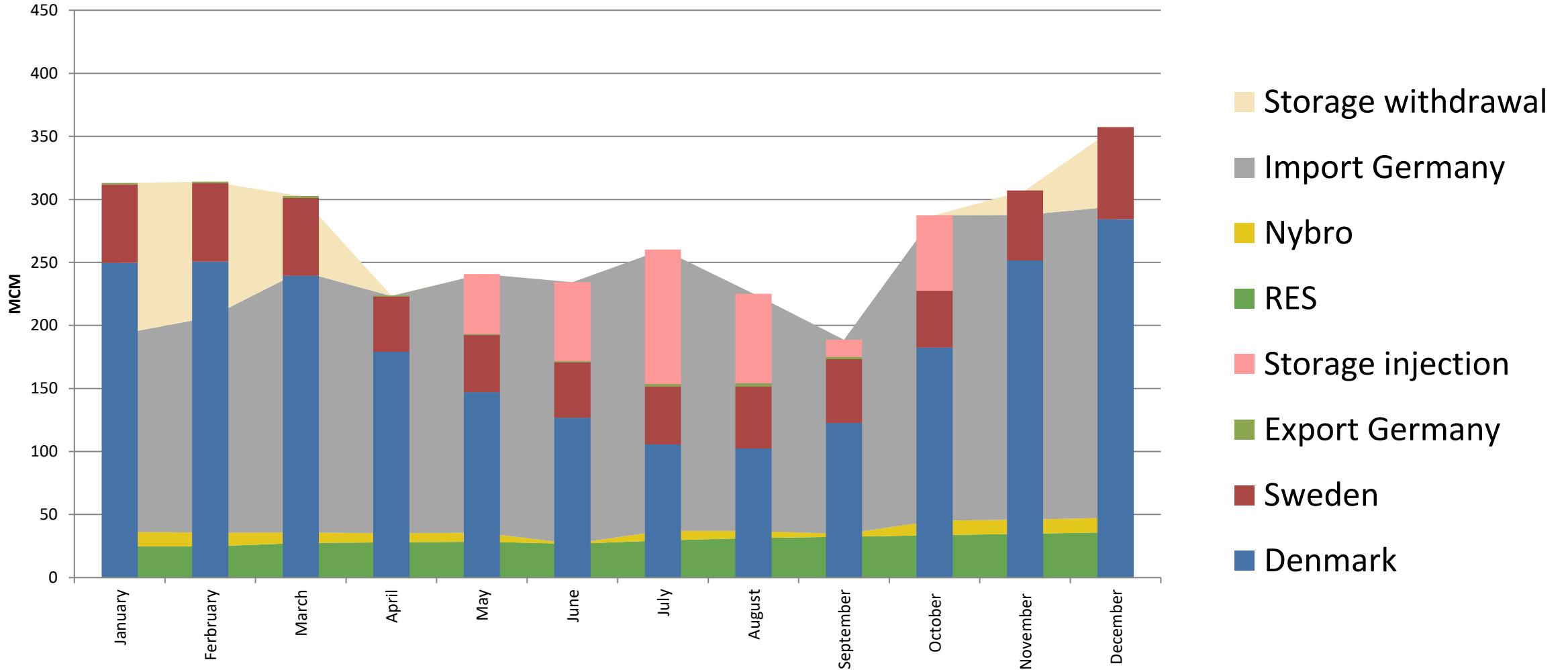
POSSIBLE SUPPLY 2020



POSSIBLE DEMAND 2020



POSSIBLE SUPPLY AND DEMAND 2020

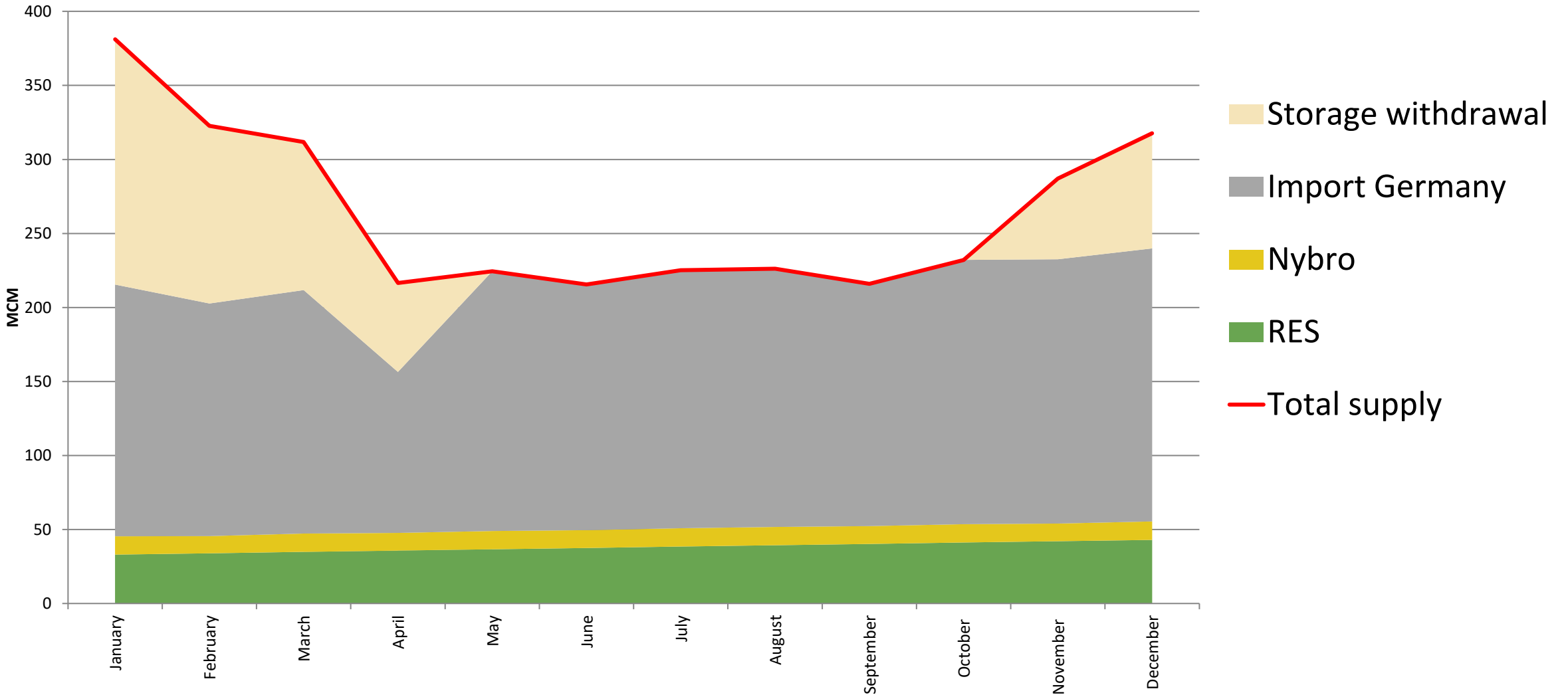


TYRA 2020-2022

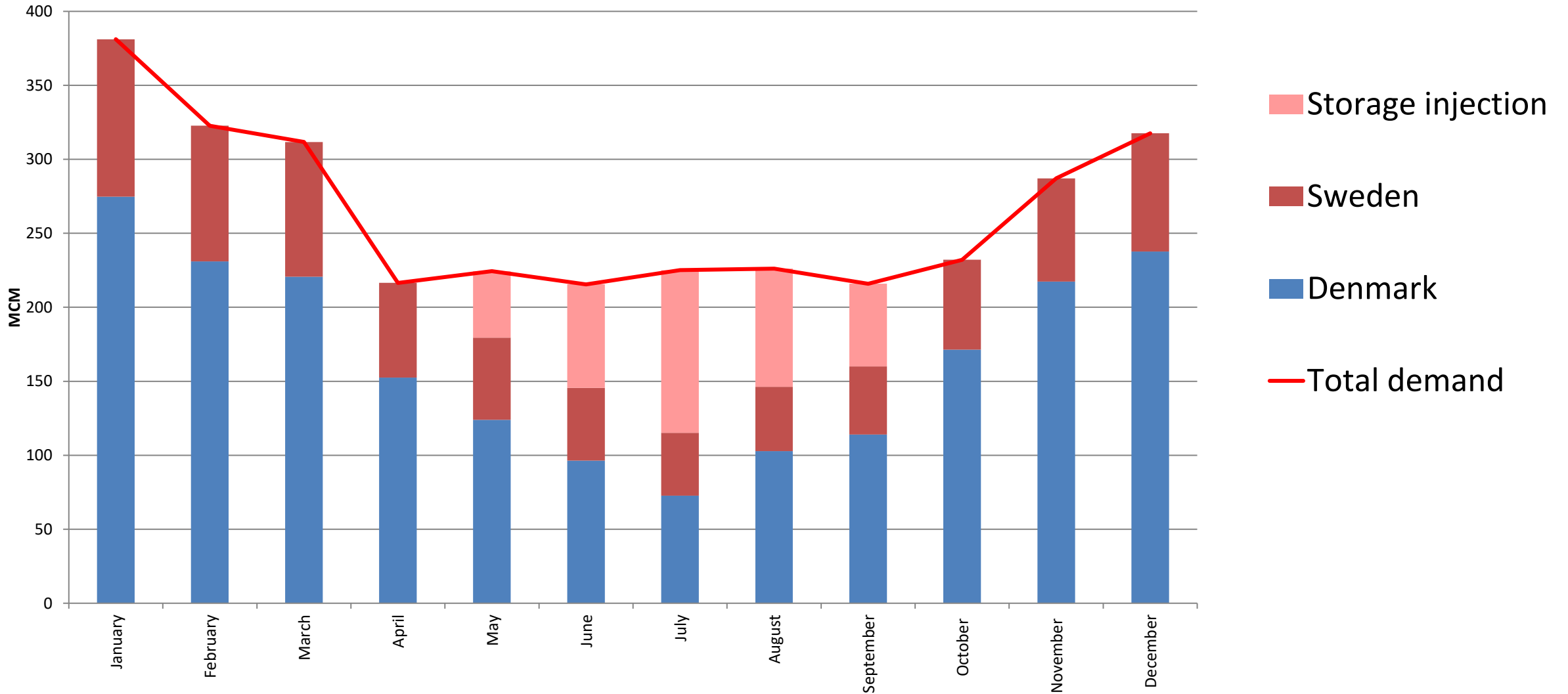
Possible supply and demand 2021

1 m³ = 12,1 kWh

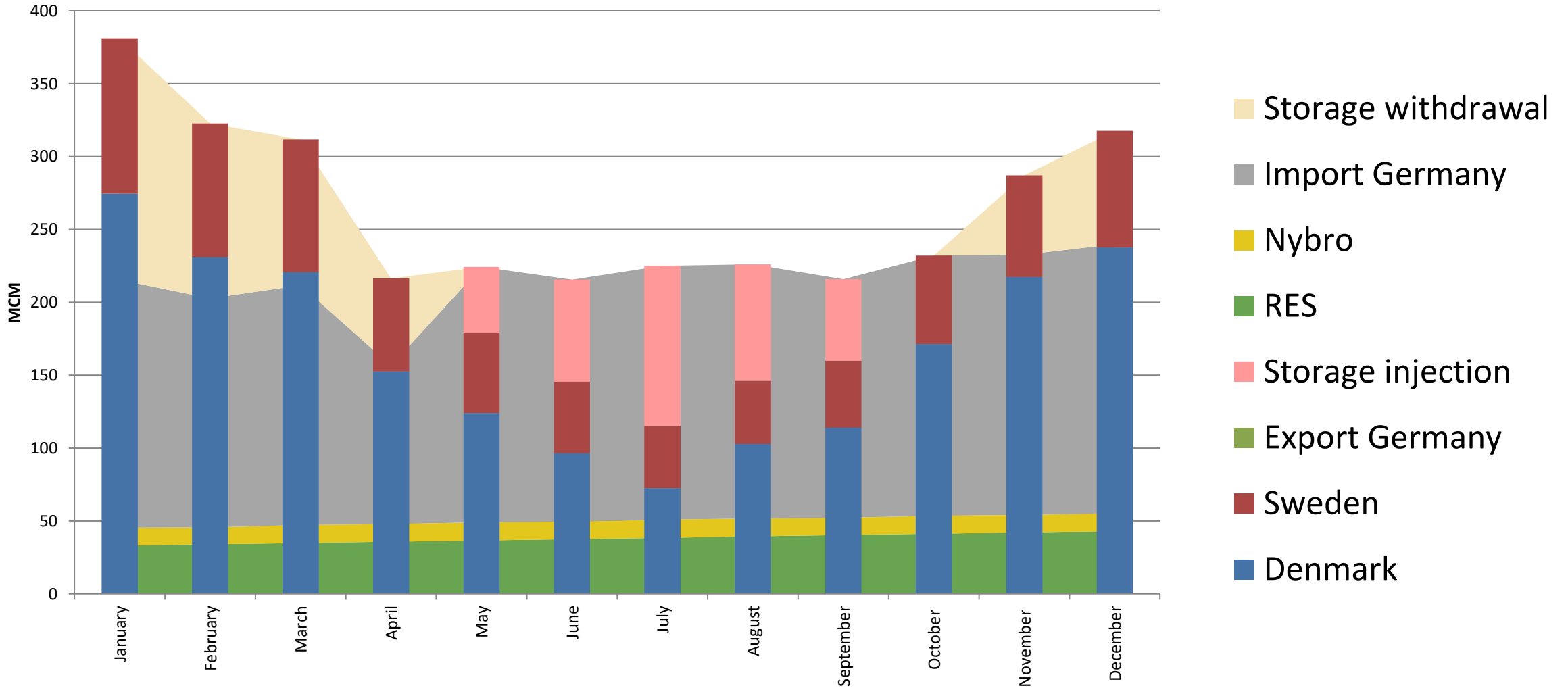
POSSIBLE SUPPLY 2021



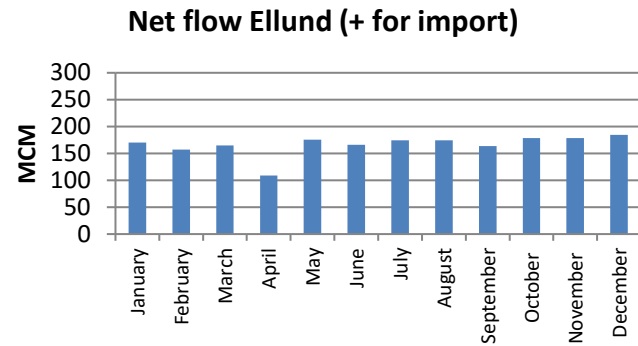
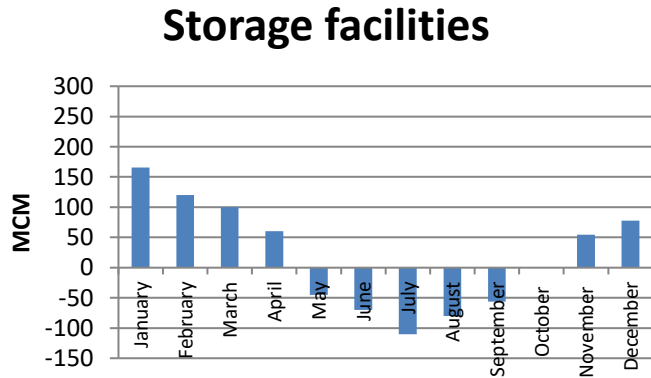
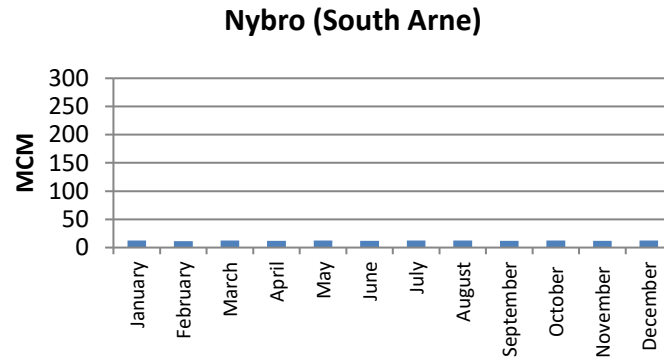
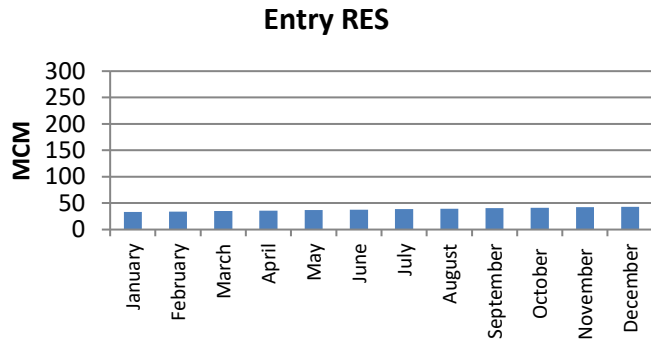
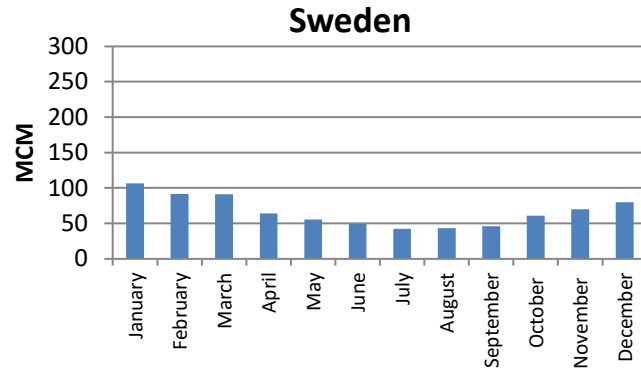
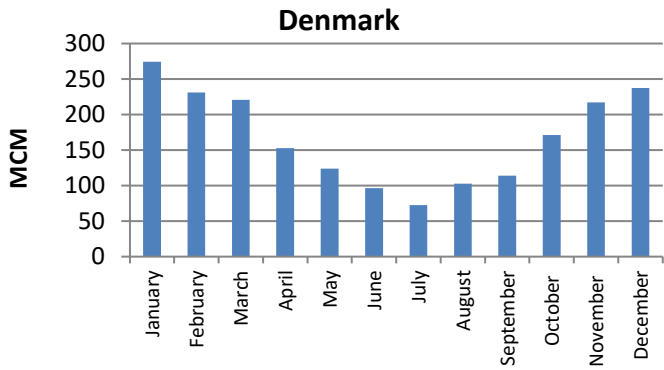
POSSIBLE DEMAND 2021



POSSIBLE SUPPLY AND DEMAND 2021



POSSIBLE SUPPLY AND DEMAND 2021



POSSIBLE DAILY IMPORT GERMANY AND STORAGE VOLUME 2021

